

Appendix 6 - Site Plan & Elevation Drawings

CIVIC ADDRESS: 1150 12 AVE SOUTHEAST SALMON ARM



Unit 209- 6321 King George Blvd
Surrey BC, V3X 1G1
www.flatarchitecture.ca
contact@flatarchitecture.ca

Ph: 604-503-4484

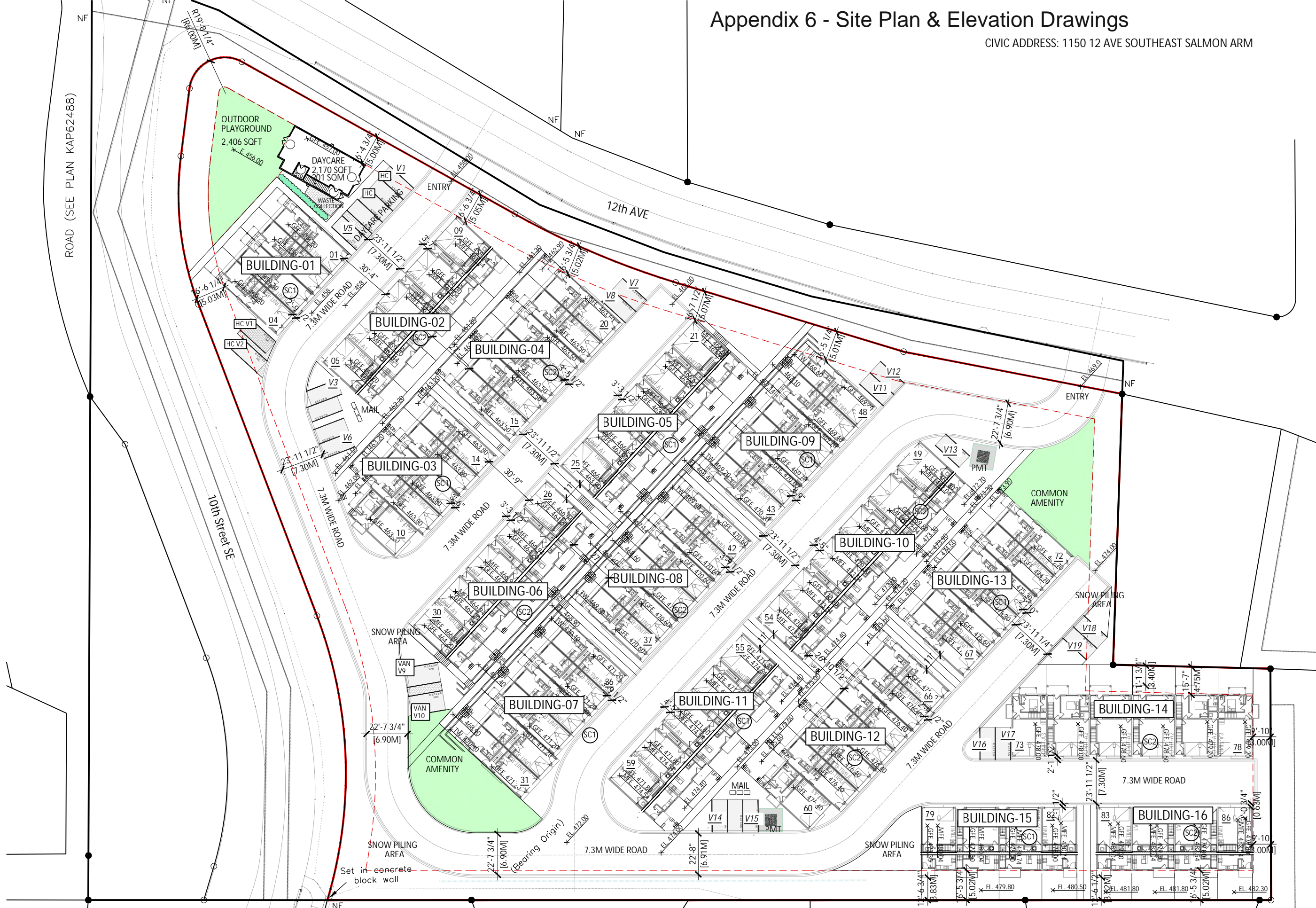
PROJECT INFO:
1150-12th AVE. SE SALMON ARM

DATE
JUL 2024
PROJECT NO:
21-248

SCALE: DRAWN BY:
AG

REV	DESCRIPTION	BY	DATE

DP-1.1



1 SITE PLAN
SCALE 1"=50'-0"

BUILDING 1

SCHEME-01



Unit 209- 6321 King George Blvd
Surrey BC, V3X 1G1
www.flat7architecture.ca
contact@flat7architecture.ca

Ph: 604-503-4484



PROJECT INFO:
1150-12th AVE. SE SALMON ARM

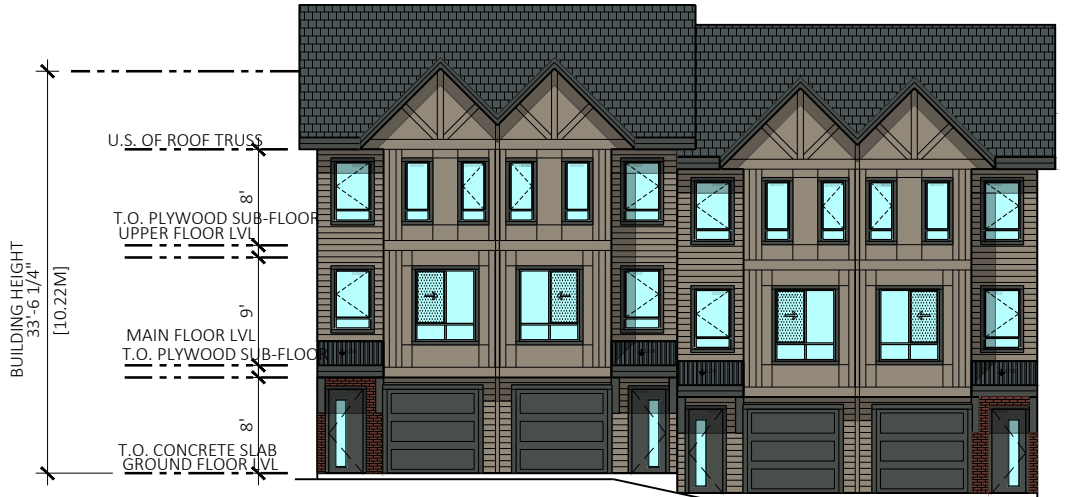
CLIENT:

DATE
JUL2024
PROJECT NO:
21-248
SCALE: DRAWN BY:
AG

REV	DESCRIPTION	BY	DATE

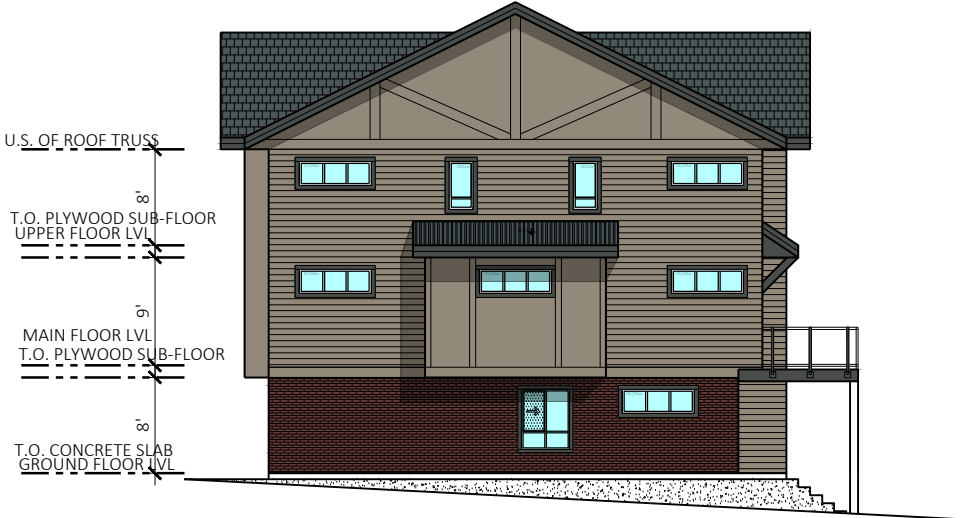
ELEVATIONS

DP-301



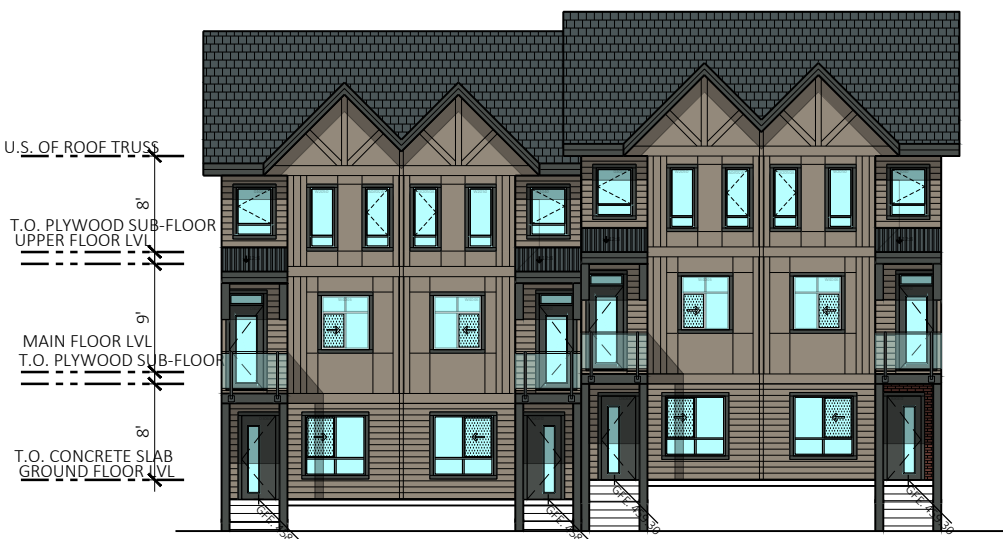
UNIT-#1 (TYPE-B2) UNIT-#2 (TYPE-B1) UNIT-#3 (TYPE-B1) UNIT-#4 (TYPE-B2)

1 ELEVATION AT GARAGE SIDE FACING
SCALE 1/16"=1'-0"



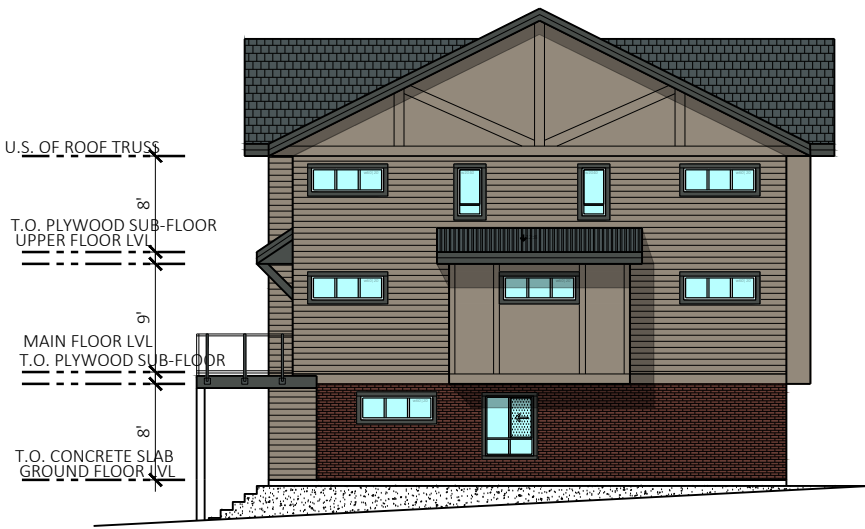
UNIT-#4 (TYPE-B2)

3 SIDE ELEVATION
SCALE 1/16"=1'-0"



UNIT-#4 (TYPE-B2) UNIT-#3 (TYPE-B1) UNIT-#2 (TYPE-B1) UNIT-#1 (TYPE-B2)

2 ELEVATION AT PRIMARY ENTRY FACING
SCALE 1/16"=1'-0"

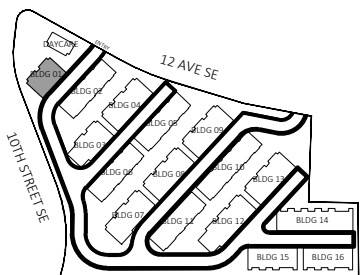


UNIT-#4 (TYPE-C)

4 SIDE ELEVATION
SCALE 1/16"=1'-0"

MATERIAL LEGEND: SCHEME 1

- A "HARDIE REVEAL SIDING" ARCTIC WHITE
- B "HARDIE BOARD & BATTEN" ARCTIC WHITE
- E1 "HARDIE HORIZONTAL SIDING (4")" ARCTIC WHITE
- D1 WOOD FACIA & TRIM BOOTHBAY BLUE
- D2 WOOD FACIA & TRIM COLOR TO MATCH JAMES HARDIE "COLONIAL GRAY"
- E GARAGE DOOR COLOR TO MATCH HARDIE IRON GRAY
- F GUARDRAIL IN BLACK
- G1 ASPHALT SHINGLE ROOF
- G2 METAL ROOF
- H VINYL FRAMED WINDOWS COLOR TO MATCH JAMES HARDIE IRON GRAY
- I THIN BRICK - IXL-320 SCHOOLHOUSE RED



BUILDING 2

SCHEME-02



PROJECT INFO:
1150-12th AVE. SE SALMON ARM

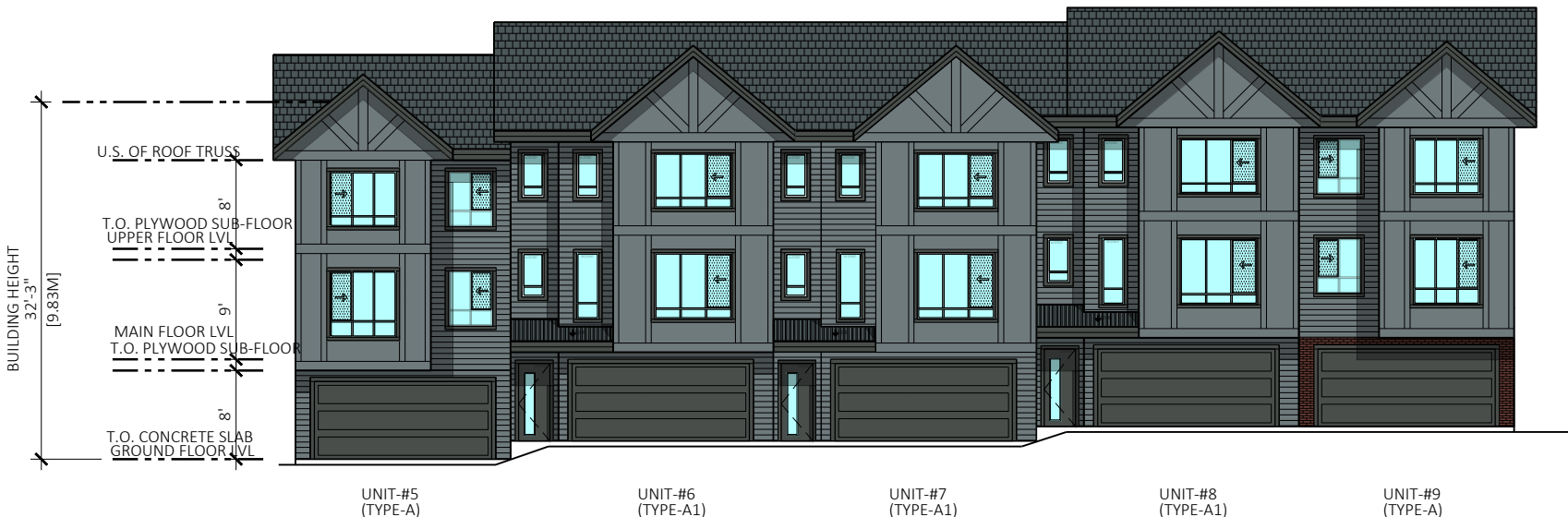
CLIENT:

DATE
JUL 2024
PROJECT NO:
21-248
SCALE: DRAWN BY:
AG

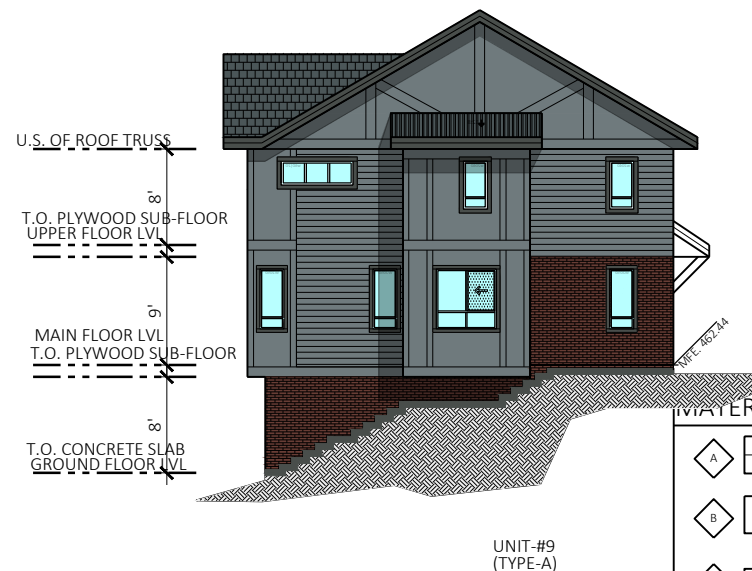
REV	DESCRIPTION	BY	DATE

ELEVATIONS

DP-302



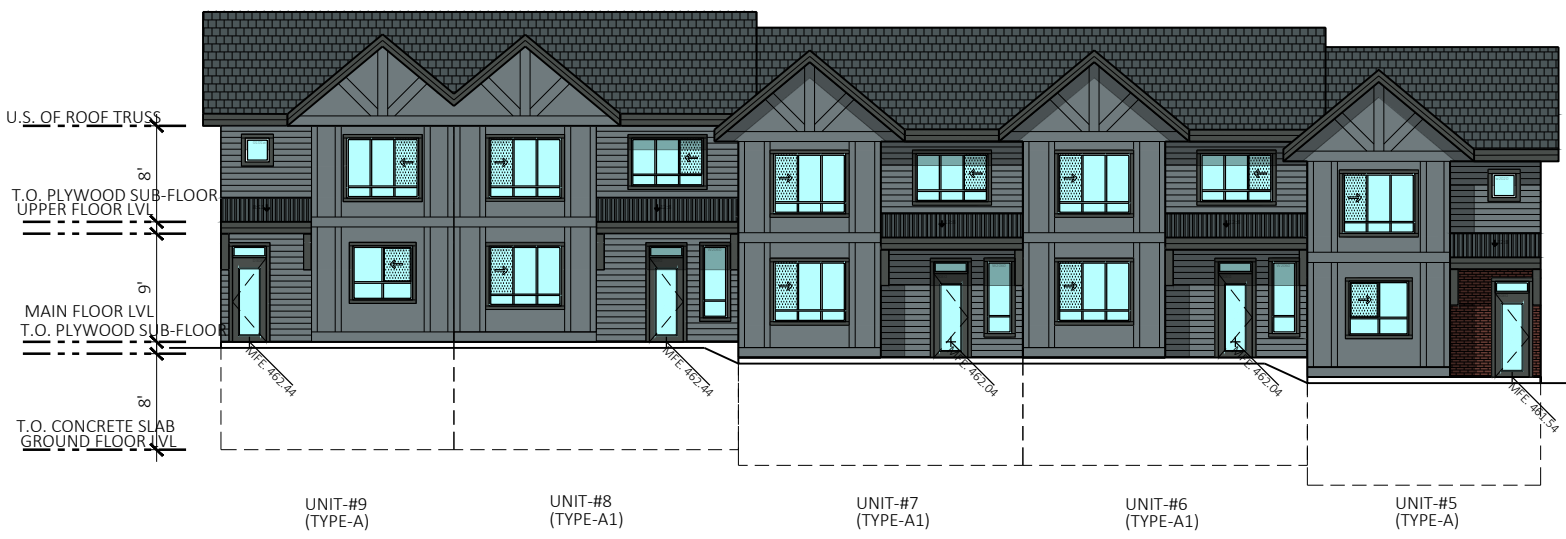
1 ELEVATION AT GARAGE SIDE FACING
SCALE 1/16"=1'-0"



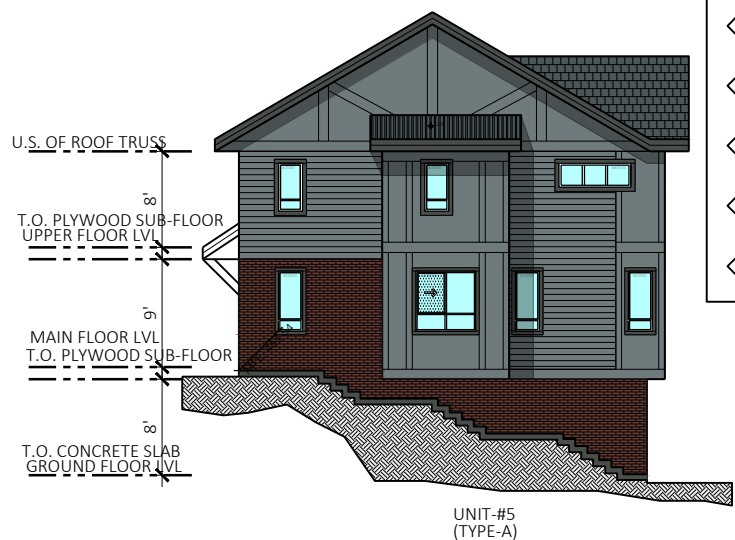
3 SIDE ELEVATION
SCALE 1/16"=1'-0"

MATERIAL LEGEND: SCHEME 2

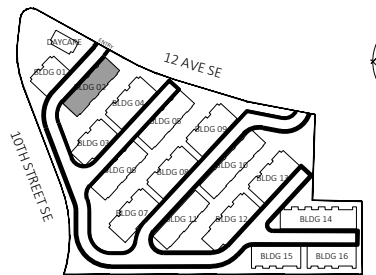
- A "HARDIE REVEAL SIDING" ARCTIC WHITE
- B "HARDIE BOARD & BATTEN" ARCTIC WHITE
- C1 "HARDIE HORIZONTAL SIDING (4")" ARCTIC WHITE
- D1 WOOD FACIA & TRIM BOOTHBAY BLUE
- D2 WOOD FACIA & TRIM COLOR TO MATCH JAMES HARDIE "COLONIAL GRAY"
- E GARAGE DOOR COLOR TO MATCH HARDIE IRON GRAY
- F GUARDRAIL IN BLACK
- G1 ASPHALT SHINGLE ROOF
- G2 METAL ROOF
- H VINYL FRAMED WINDOWS COLOR TO MATCH JAMES HARDIE IRON GRAY
- I THIN BRICK- IXL- 320 SCHOOLHOUSE RED



2 ELEVATION AT PRIMARY ENTRY FACING
SCALE 1/16"=1'-0"



4 SIDE ELEVATION
SCALE 1/16"=1'-0"



BUILDING 3

SCHEME-01



Unit 209- 6321 King George Blvd
Surrey BC, V3X 1G1
www.flatarchitecture.ca
contact@flatarchitecture.ca
Ph: 604-503-4484



PROJECT INFO:
1150-12th AVE. SE SALMON ARM

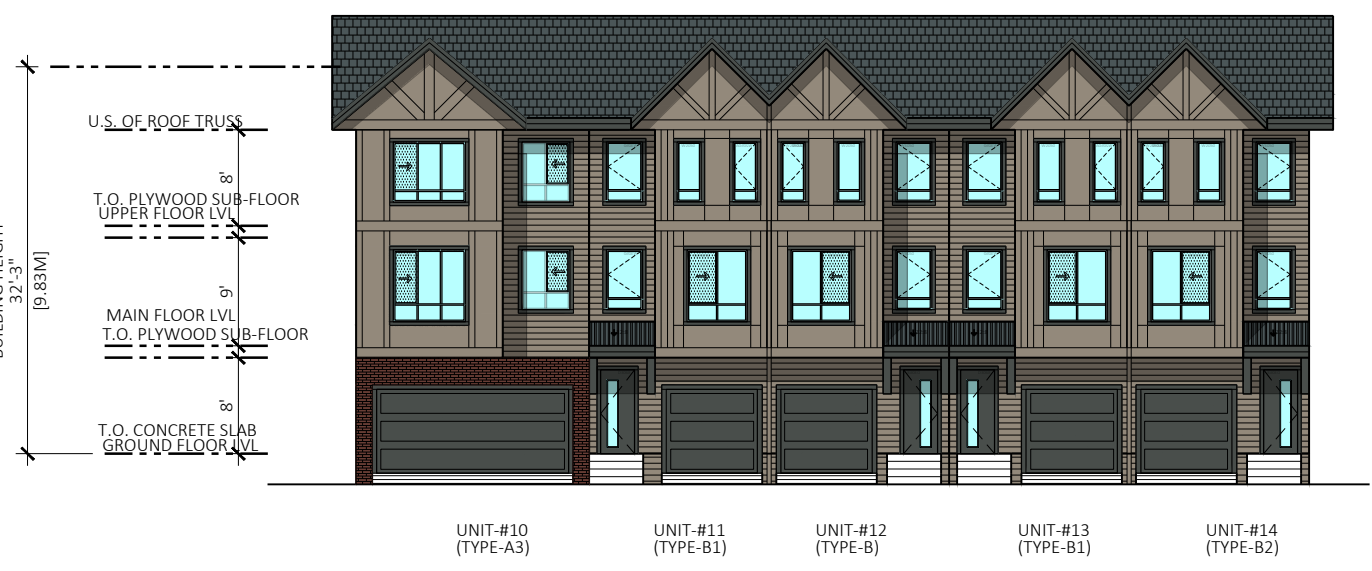
CLIENT:

DATE
JUL2024
PROJECT NO:
21-248
SCALE: DRAWN BY:
AG

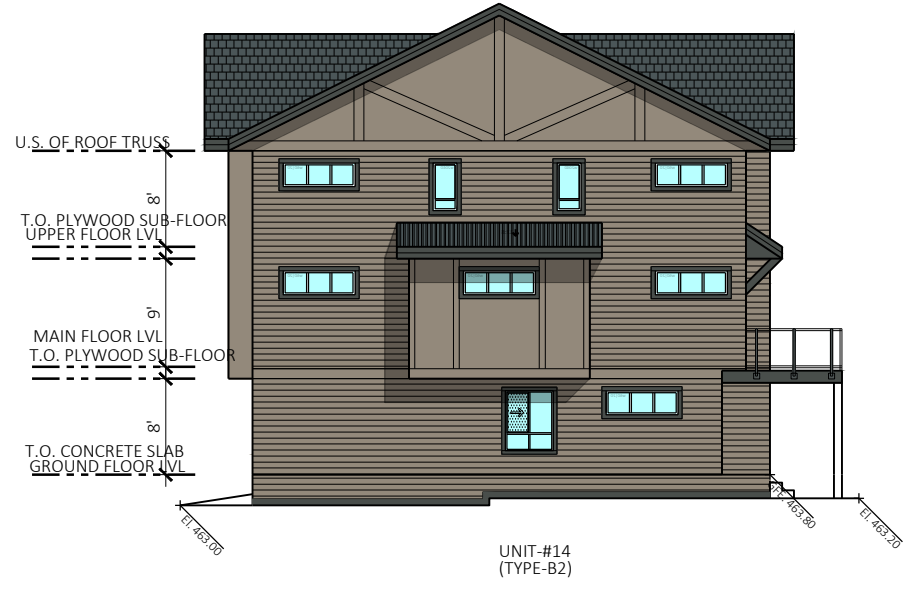
REV	DESCRIPTION	BY	DATE

ELEVATIONS

DP-303



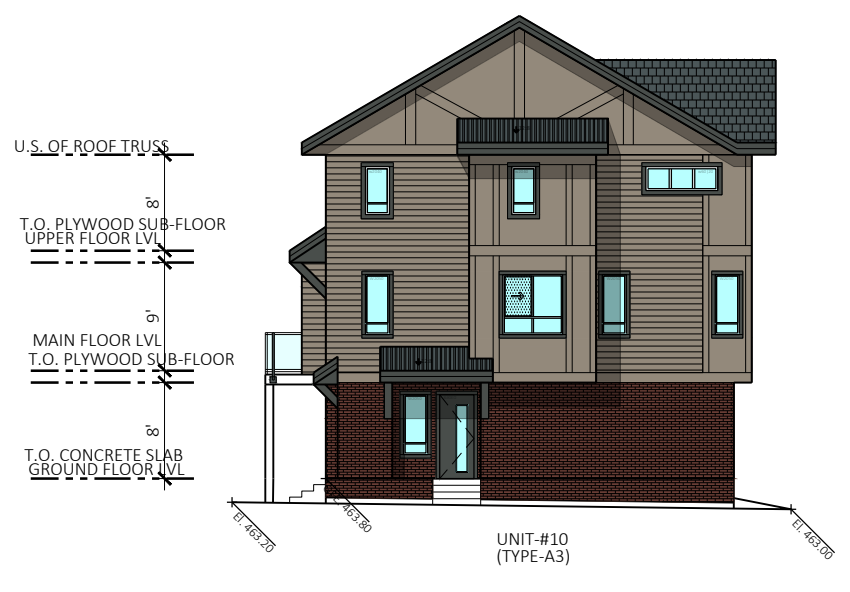
1 ELEVATION AT GARAGE SIDE FACING
SCALE 1/16"=1'-0"



3 SIDE ELEVATION
SCALE 1/16"=1'-0"



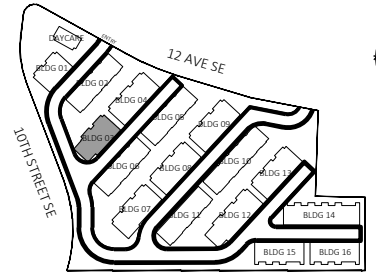
2 ELEVATION AT PRIMARY ENTRY FACING
SCALE 1/16"=1'-0"



4 SIDE ELEVATION
SCALE 1/16"=1'-0"

MATERIAL LEGEND: SCHEME 1

- A "HARDIE REVEAL SIDING" ARCTIC WHITE
- B "HARDIE BOARD & BATTEN" ARCTIC WHITE
- C1 "HARDIE HORIZONTAL SIDING (4")" ARCTIC WHITE
- D1 WOOD FACIA & TRIM BOOTHBAY BLUE
- D2 WOOD FACIA & TRIM COLOR TO MATCH JAMES HARDIE "COLONIAL GRAY"
- E GARAGE DOOR COLOR TO MATCH HARDIE IRON GRAY
- F GUARDRAIL IN BLACK
- G1 ASPHALT SHINGLE ROOF
- G2 METAL ROOF
- H VINYL FRAMED WINDOWS COLOR TO MATCH JAMES HARDIE IRON GRAY
- I THIN BRICK - IXL- 320 SCHOOLHOUSE RED



BUILDING 4

SCHEME-02



Unit 209- 6321 King George Blvd
Surrey BC, V3X 1G1
www.flatarchitecture.ca
contact@flatarchitecture.ca
Ph: 604-503-4484



PROJECT INFO:
1150-12th AVE. SE SALMON ARM
CLIENT:

DATE
JUL2024
PROJECT NO:
21-248
SCALE: DRAWN BY:
AG

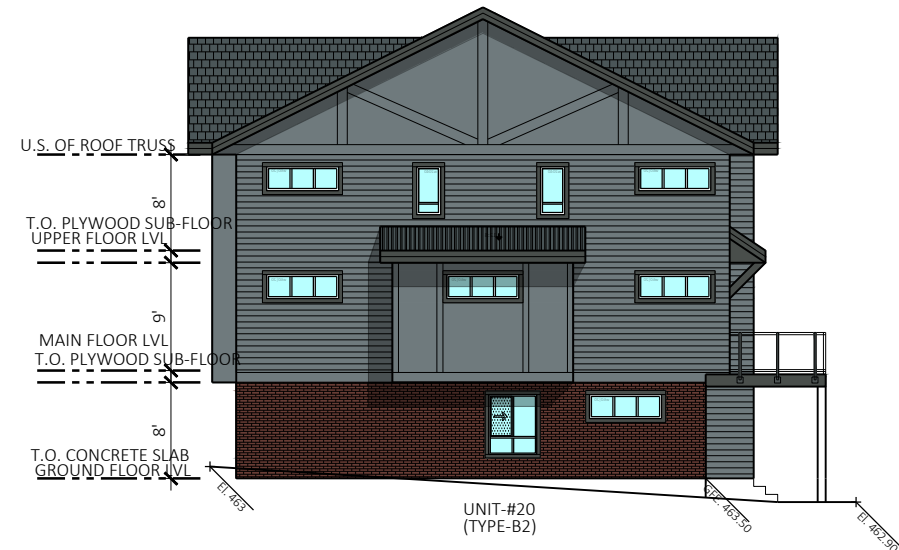
REV	DESCRIPTION	BY	DATE

ELEVATIONS

DP-304



1 ELEVATION AT GARAGE SIDE FACING
SCALE 1/16"=1'-0"



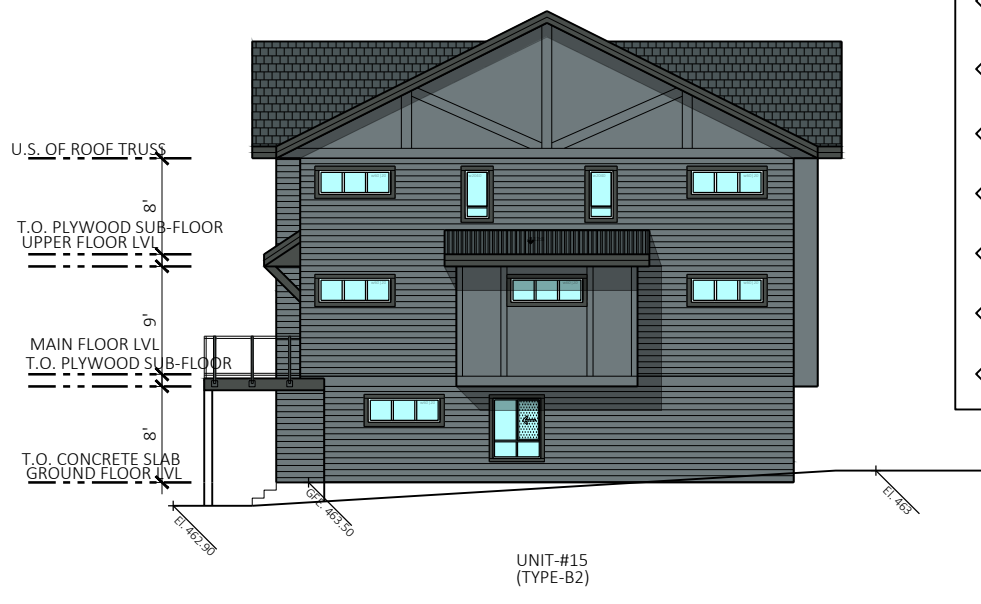
3 SIDE ELEVATION
SCALE 1/16"=1'-0"

MATERIAL LEGEND: SCHEME 2

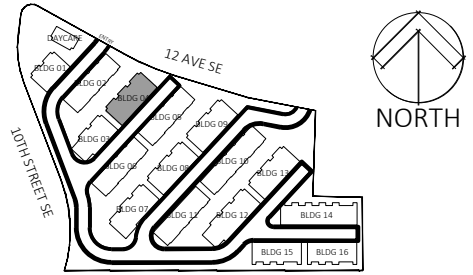
A	"HARDIE REVEAL SIDING" ARCTIC WHITE
B	"HARDIE BOARD & BATTEN" ARCTIC WHITE
C1	"HARDIE HORIZONTAL SIDING (4")" ARCTIC WHITE
D1	WOOD FACIA & TRIM BOOTHBAY BLUE
D2	WOOD FACIA & TRIM COLOR TO MATCH JAMES HARDIE "COLONIAL GRAY"
E	GARAGE DOOR COLOR TO MATCH HARDIE IRON GRAY
F	GUARDRAIL IN BLACK
G1	ASPHALT SHINGLE ROOF
G2	METAL ROOF
H	VINYL FRAMED WINDOWS COLOR TO MATCH JAMES HARDIE IRON GRAY
I	THIN BRICK- IXL- 320 SCHOOLHOUSE RED



2 ELEVATION AT PRIMARY ENTRY FACING
SCALE 1/16"=1'-0"



4 SIDE ELEVATION
SCALE 1/16"=1'-0"



BUILDING 5

SCHEME-01



PROJECT INFO:
1150-12th AVE. SE SALMON ARM

CLIENT:

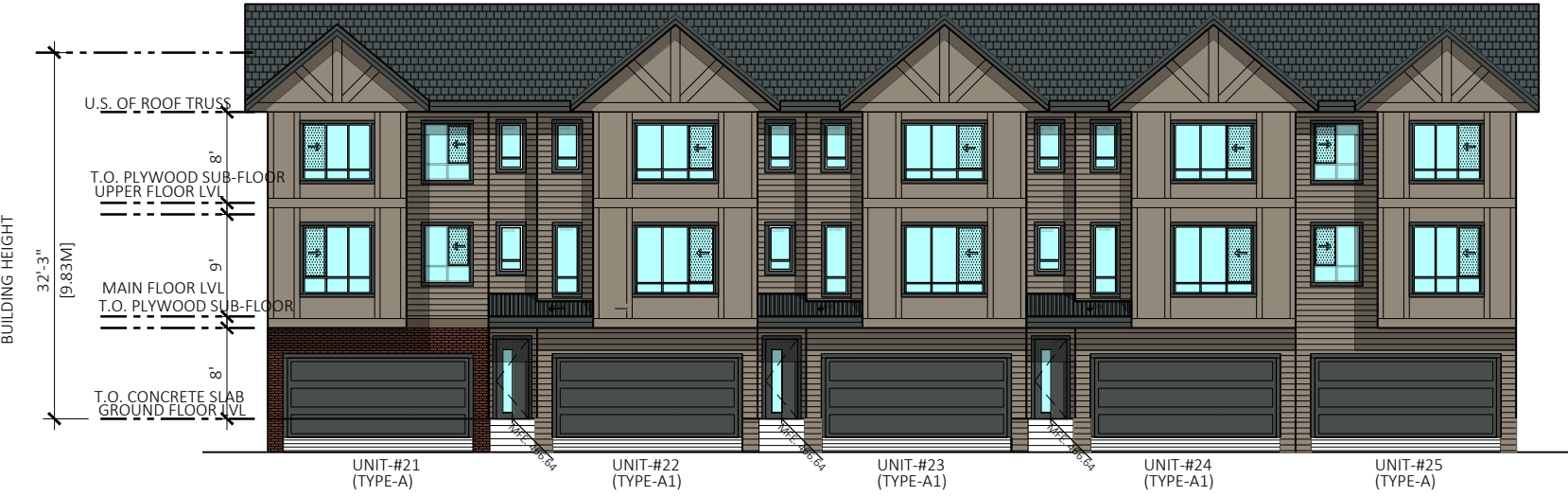
DATE
JUL2024
PROJECT NO:
21-248

SCALE: DRAWN BY:
AG

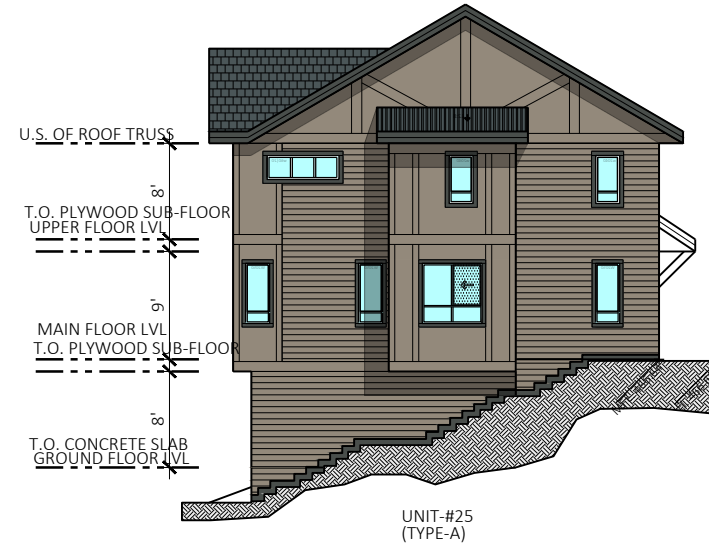
REV	DESCRIPTION	BY	DATE

ELEVATIONS

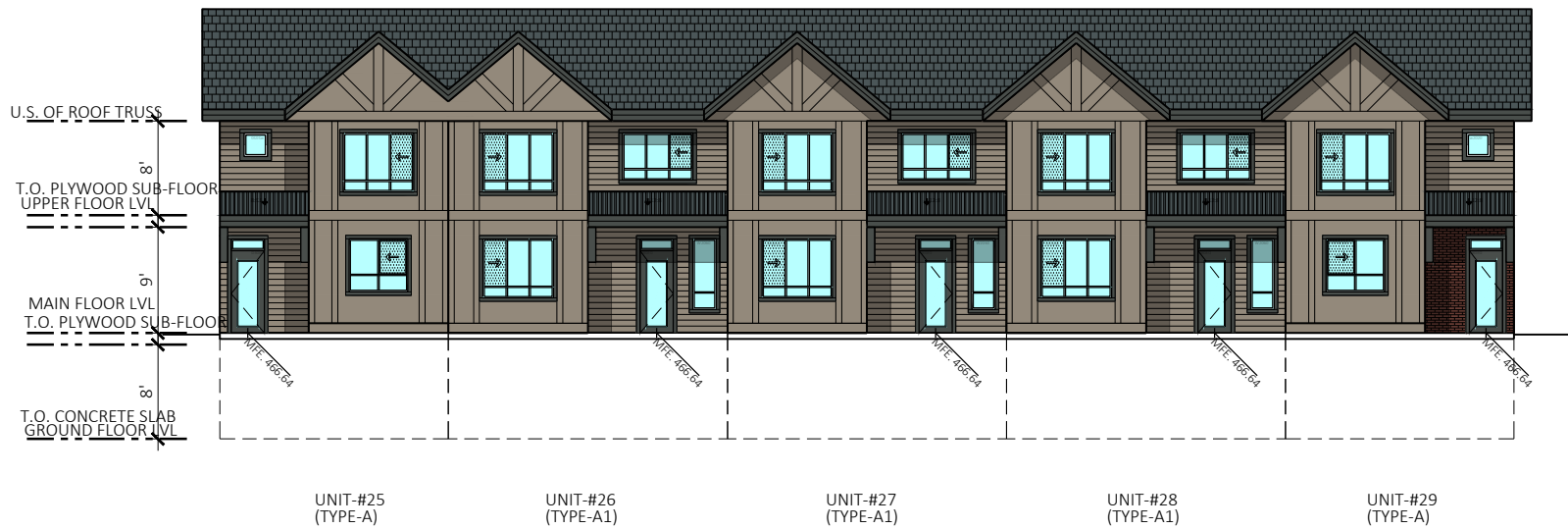
DP-305



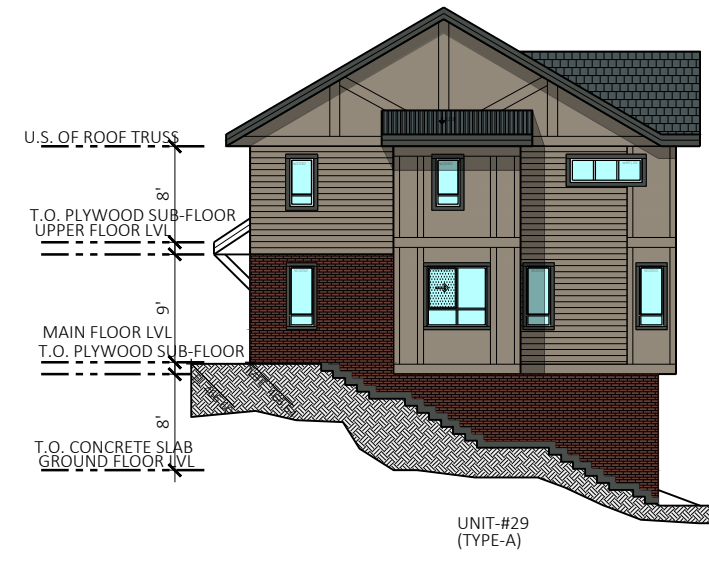
1 ELEVATION AT GARAGE SIDE FACING
SCALE 1/16"=1'-0"



3 SIDE ELEVATION
SCALE 1/16"=1'-0"



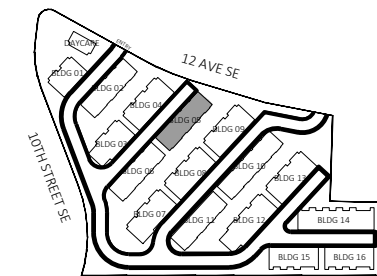
2 ELEVATION AT PRIMARY ENTRY FACING
SCALE 1/16"=1'-0"



4 SIDE ELEVATION
SCALE 1/16"=1'-0"

MATERIAL LEGEND: SCHEME 1

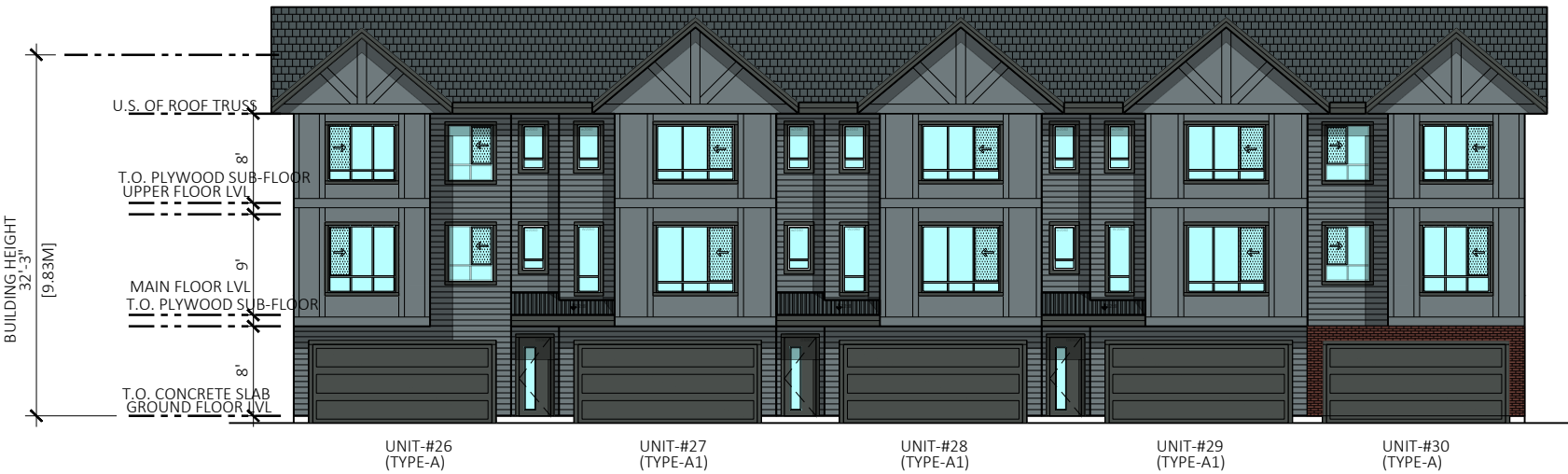
A	"HARDIE REVEAL SIDING" ARCTIC WHITE
B	"HARDIE BOARD & BATTEN" ARCTIC WHITE
C1	"HARDIE HORIZONTAL SIDING (4")" ARCTIC WHITE
D1	WOOD FACIA & TRIM BOOTHBAY BLUE
D2	WOOD FACIA & TRIM COLOR TO MATCH JAMES HARDIE "COLONIAL GRAY"
E	GARAGE DOOR COLOR TO MATCH HARDIE IRON GRAY
F	GUARDRAIL IN BLACK
G1	ASPHALT SHINGLE ROOF
G2	METAL ROOF
H	VINYL FRAMED WINDOWS COLOR TO MATCH JAMES HARDIE IRON GRAY
I	THIN BRICK - IXL- 320 SCHOOLHOUSE RED



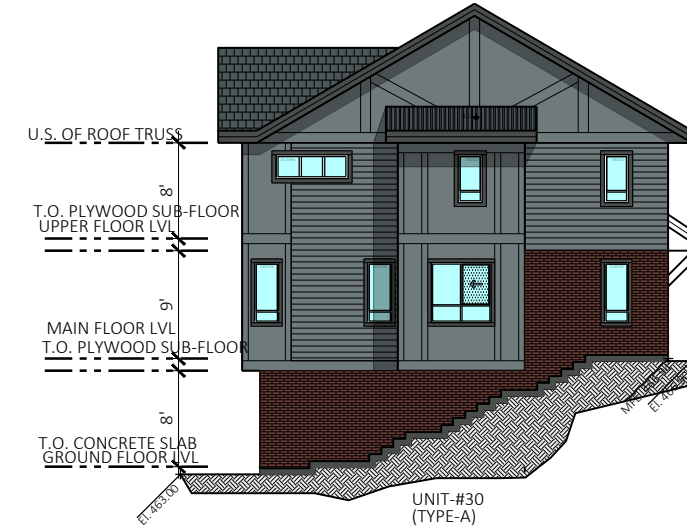
BUILDING 6

SCHEME-02

REV	DESCRIPTION	BY	DATE



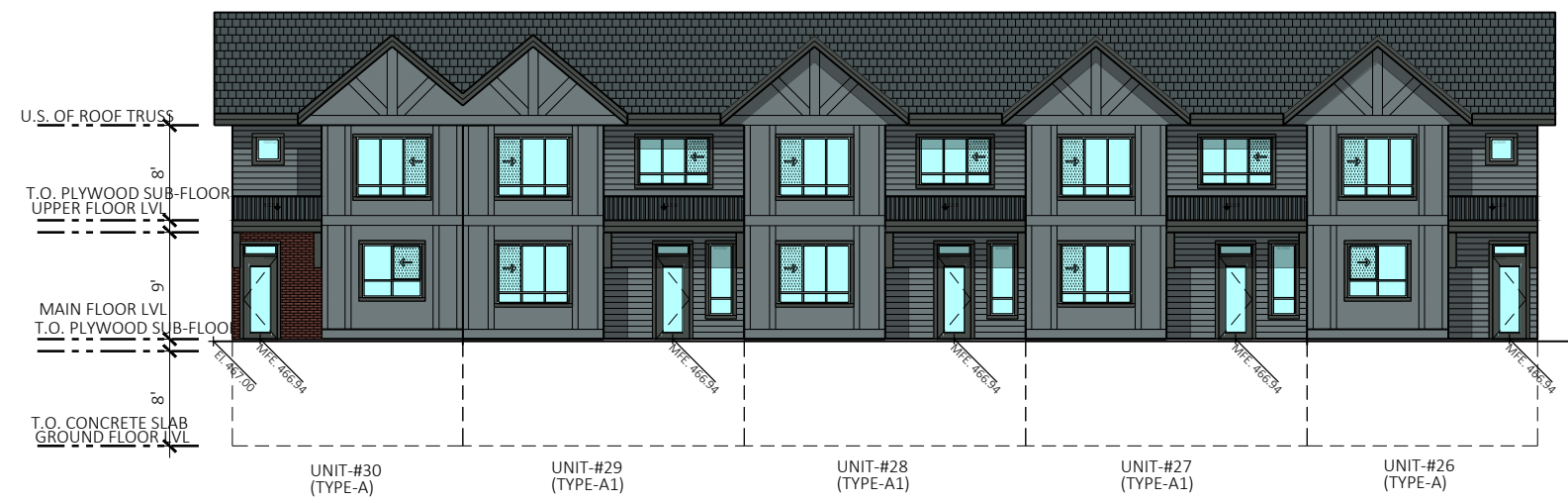
1 ELEVATION AT GARAGE SIDE FACING
SCALE 1/16"=1'-0"



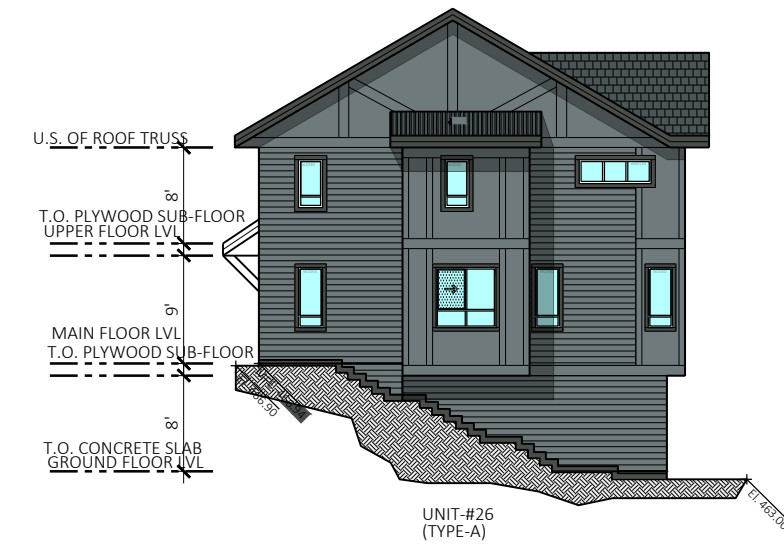
3 SIDE ELEVATION
SCALE 1/16"=1'-0"

MATERIAL LEGEND: SCHEME 2

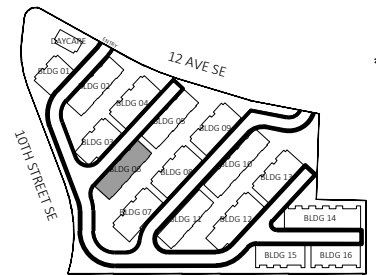
A	"HARDIE REVEAL SIDING" ARCTIC WHITE
B	"HARDIE BOARD & BATTEN" ARCTIC WHITE
C1	"HARDIE HORIZONTAL SIDING (4")" ARCTIC WHITE
D1	WOOD FACIA & TRIM BOOTHBAY BLUE
D2	WOOD FACIA & TRIM COLOR TO MATCH JAMES HARDIE "COLONIAL GRAY"
E	GARAGE DOOR COLOR TO MATCH HARDIE IRON GRAY
F	GUARDRAIL IN BLACK
G1	ASPHALT SHINGLE ROOF
G2	METAL ROOF
H	VINYL FRAMED WINDOWS COLOR TO MATCH JAMES HARDIE IRON GRAY
I	THIN BRICK- IXL- 320 SCHOOLHOUSE RED



2 ELEVATION AT PRIMARY ENTRY FACING
SCALE 1/16"=1'-0"



4 SIDE ELEVATION
SCALE 1/16"=1'-0"



BUILDING 7

SCHEME-01



Unit 209- 6321 King George Blvd
Surrey BC, V3X 1G1
www.flat7architecture.ca
contact@flat7architecture.ca

Ph: 604-503-4484



PROJECT INFO:
1150-12th AVE. SE SALMON ARM

CLIENT:

DATE
JUL2024
PROJECT NO:
21-248

SCALE: DRAWN BY:
AG

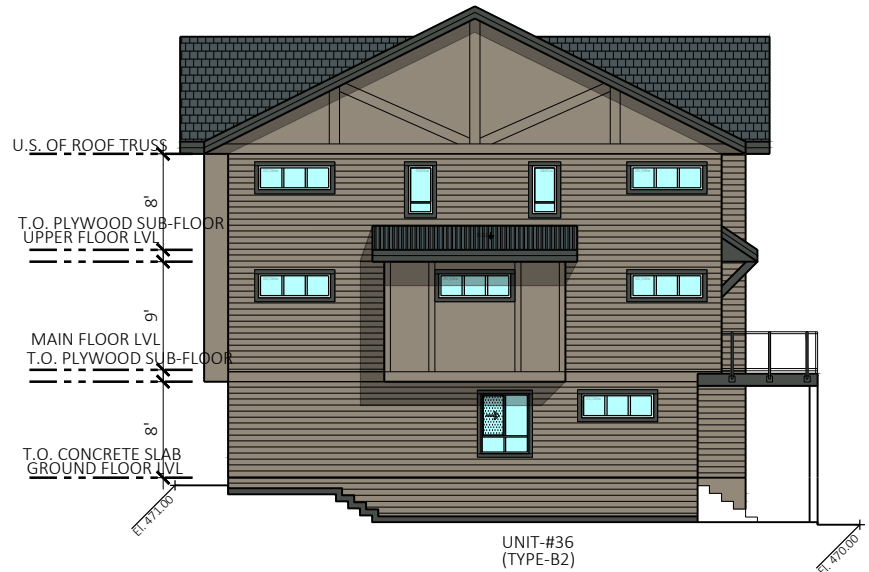
REV	DESCRIPTION	BY	DATE

ELEVATIONS

DP-307



1 ELEVATION AT GARAGE SIDE FACING
SCALE 1/16"=1'-0"



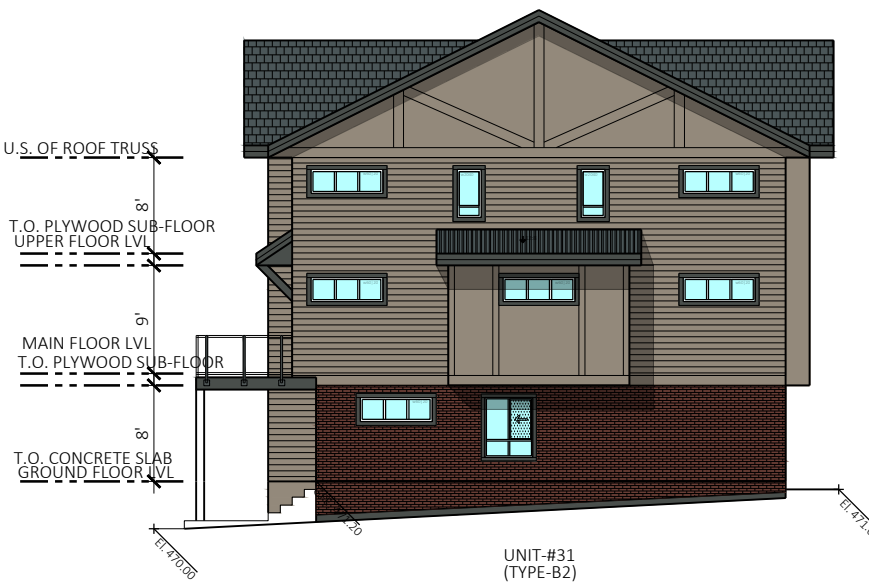
3 SIDE ELEVATION
SCALE 1/16"=1'-0"

MATERIAL LEGEND: SCHEME 1

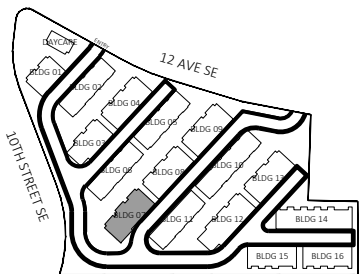
- A "HARDIE REVEAL SIDING" ARCTIC WHITE
- B "HARDIE BOARD & BATTEN" ARCTIC WHITE
- C1 "HARDIE HORIZONTAL SIDING (4")" ARCTIC WHITE
- D1 WOOD FACIA & TRIM BOOTHBAY BLUE
- D2 WOOD FACIA & TRIM COLOR TO MATCH JAMES HARDIE "COLONIAL GRAY"
- E GARAGE DOOR COLOR TO MATCH HARDIE IRON GRAY
- F GUARDRAIL IN BLACK
- G1 ASPHALT SHINGLE ROOF
- G2 METAL ROOF
- H VINYL FRAMED WINDOWS COLOR TO MATCH JAMES HARDIE IRON GRAY
- I THIN BRICK - IXL- 320 SCHOOLHOUSE RED



2 ELEVATION AT PRIMARY ENTRY FACING
SCALE 1/16"=1'-0"



4 SIDE ELEVATION
SCALE 1/16"=1'-0"



BUILDING 8

SCHEME-02



PROJECT INFO:
1150-12th AVE. SE SALMON ARM

CLIENT:

DATE
JUL 2024
PROJECT NO:
21-248
SCALE: DRAWN BY:
AG

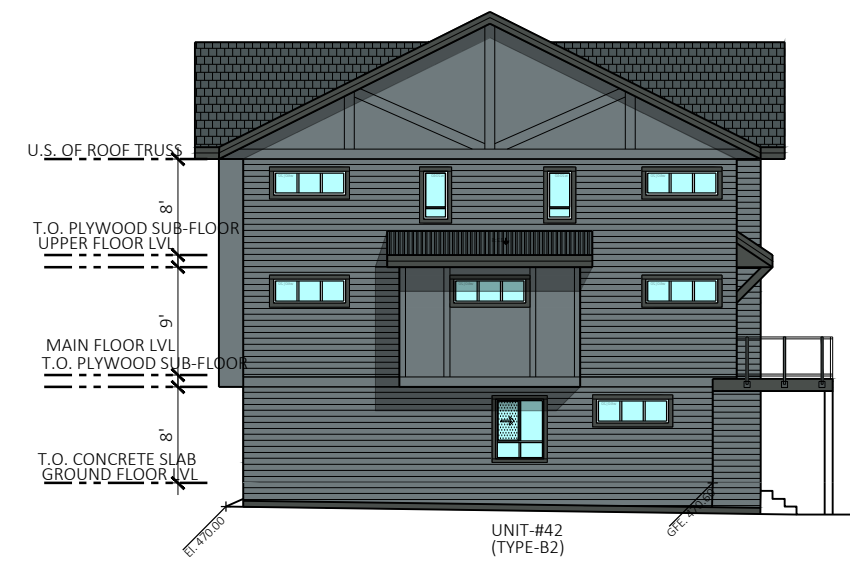
REV	DESCRIPTION	BY	DATE

ELEVATIONS

DP-308



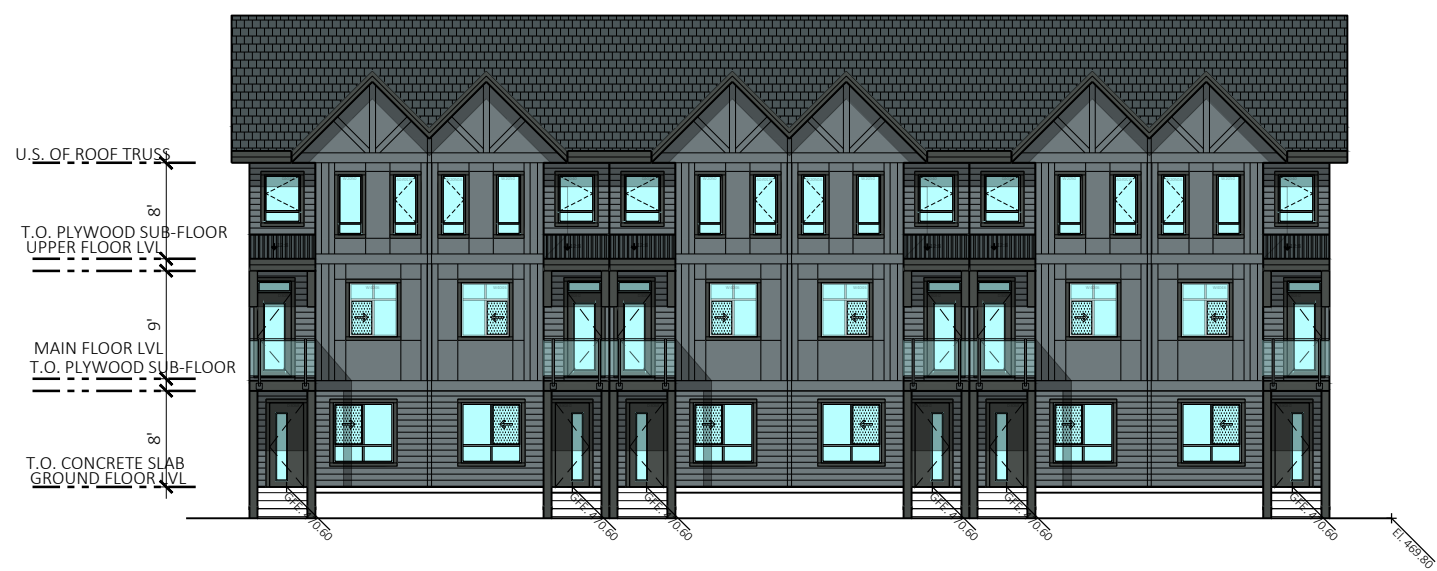
1 ELEVATION AT GARAGE SIDE FACING
SCALE 1/16"=1'-0"



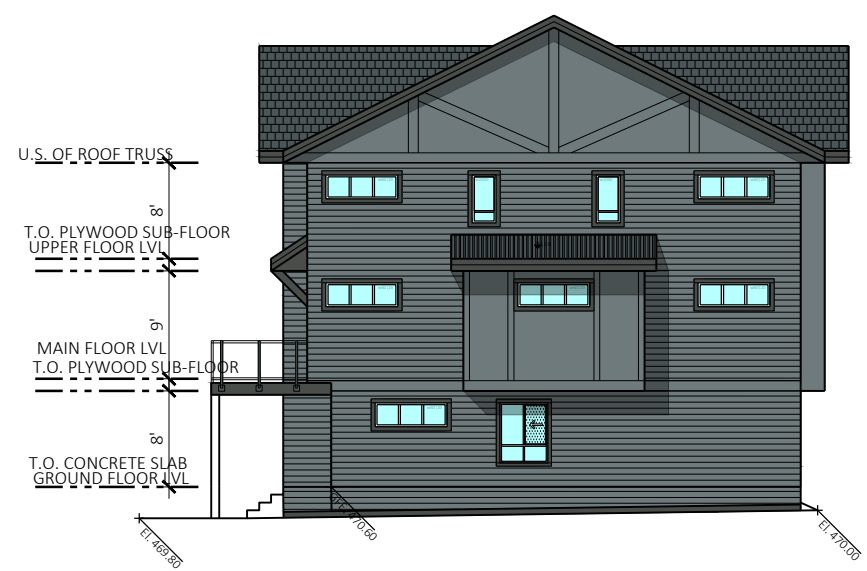
3 SIDE ELEVATION
SCALE 1/16"=1'-0"

MATERIAL LEGEND: SCHEME 2

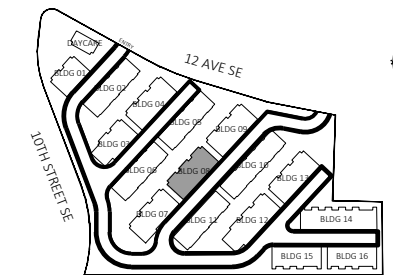
- A "HARDIE REVEAL SIDING" ARCTIC WHITE
- B "HARDIE BOARD & BATTEN" ARCTIC WHITE
- C1 "HARDIE HORIZONTAL SIDING (4")" ARCTIC WHITE
- D1 WOOD FACIA & TRIM BOOTHBAY BLUE
- D2 WOOD FACIA & TRIM COLOR TO MATCH JAMES HARDIE "COLONIAL GRAY"
- E GARAGE DOOR COLOR TO MATCH HARDIE IRON GRAY
- F GUARDRAIL IN BLACK
- G1 ASPHALT SHINGLE ROOF
- G2 METAL ROOF
- H VINYL FRAMED WINDOWS COLOR TO MATCH JAMES HARDIE IRON GRAY
- I THIN BRICK - IXL- 320 SCHOOLHOUSE RED



2 ELEVATION AT PRIMARY ENTRY FACING
SCALE 1/16"=1'-0"



4 SIDE ELEVATION
SCALE 1/16"=1'-0"



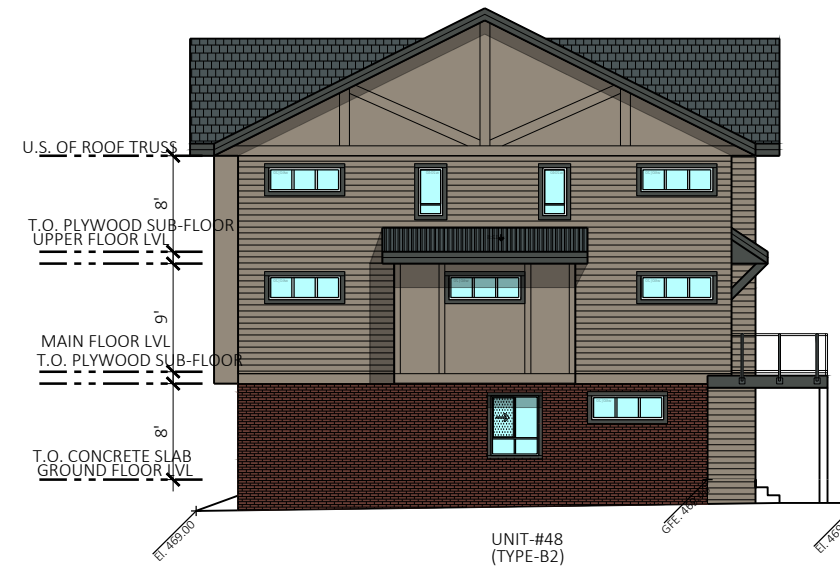
BUILDING 9

SCHEME-01

REV	DESCRIPTION	BY	DATE



1 ELEVATION AT GARAGE SIDE FACING
SCALE 1/16"=1'-0"



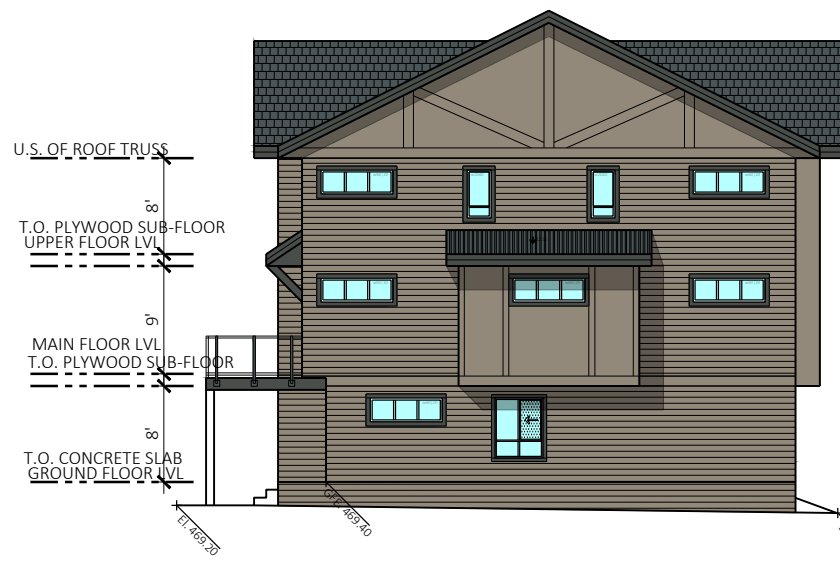
3 SIDE ELEVATION
SCALE 1/16"=1'-0"

MATERIAL LEGEND: SCHEME 1

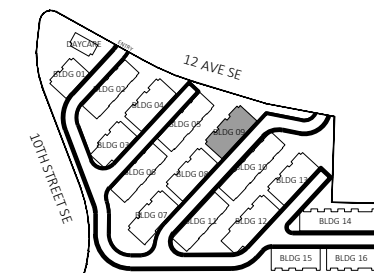
A	"HARDIE REVEAL SIDING" ARCTIC WHITE
B	"HARDIE BOARD & BATTEN" ARCTIC WHITE
C1	"HARDIE HORIZONTAL SIDING (4\")" ARCTIC WHITE
D1	WOOD FACIA & TRIM BOOTHBAY BLUE
D2	WOOD FACIA & TRIM COLOR TO MATCH JAMES HARDIE "COLONIAL GRAY"
E	GARAGE DOOR COLOR TO MATCH HARDIE IRON GRAY
F	GUARDRAIL IN BLACK
G1	ASPHALT SHINGLE ROOF
G2	METAL ROOF
H	VINYL FRAMED WINDOWS COLOR TO MATCH JAMES HARDIE IRON GRAY
I	THIN BRICK - IXL- 320 SCHOOLHOUSE RED



2 ELEVATION AT PRIMARY ENTRY FACING
SCALE 1/16"=1'-0"



4 SIDE ELEVATION
SCALE 1/16"=1'-0"



BUILDING 10

SCHEME-02



PROJECT INFO:
1150-12th AVE. SE SALMON ARM

CLIENT:

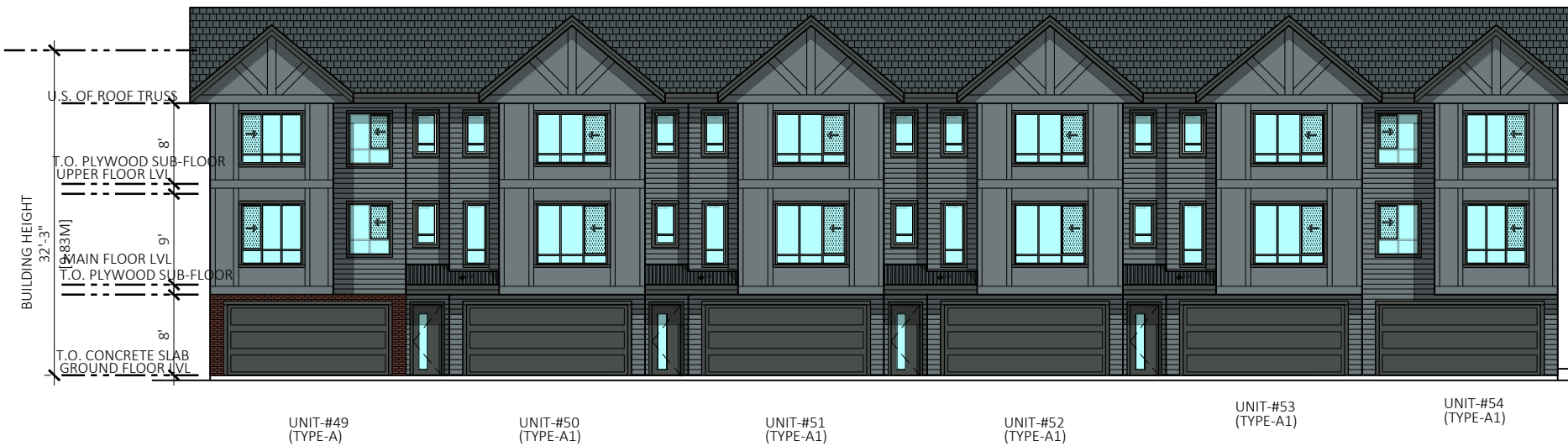
DATE
JUL 2024
PROJECT NO:
21-248

SCALE: DRAWN BY:
AG

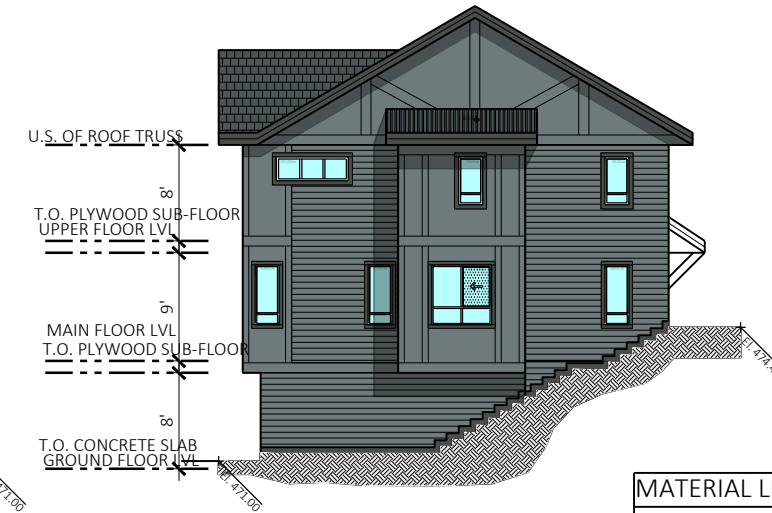
REV	DISCREPTION	BY	DATE

ELEVATIONS

DP-310



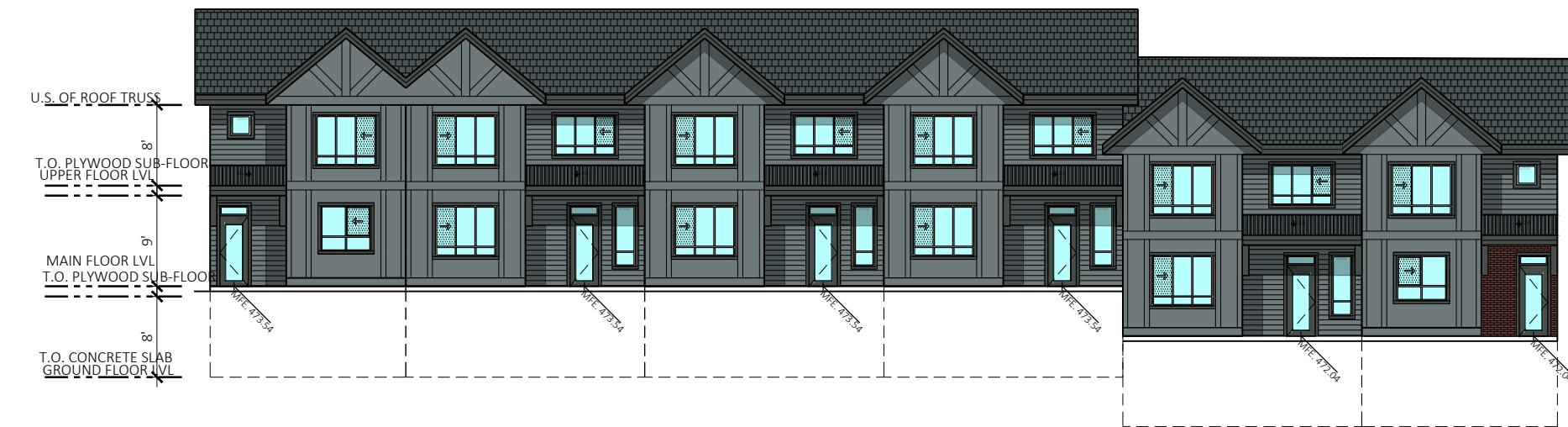
1 ELEVATION AT GARAGE SIDE FACING
SCALE 1/16"=1'-0"



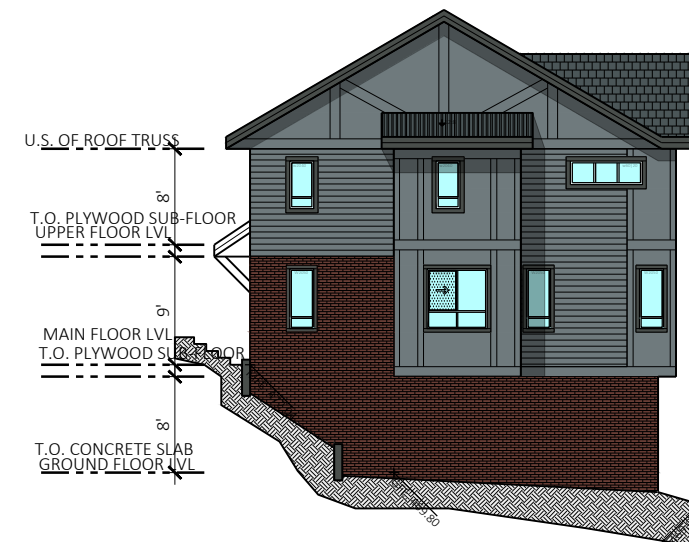
3 SIDE ELEVATION
SCALE 1/16"=1'-0"

MATERIAL LEGEND: SCHEME 2

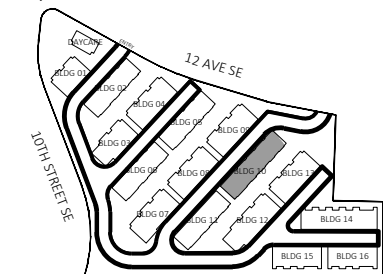
A	"HARDIE REVEAL SIDING" ARCTIC WHITE
B	"HARDIE BOARD & BATTEN" ARCTIC WHITE
C1	"HARDIE HORIZONTAL SIDING (4")" ARCTIC WHITE
D1	WOOD FACIA & TRIM BOOTHBAY BLUE
D2	WOOD FACIA & TRIM COLOR TO MATCH JAMES HARDIE "COLONIAL GRAY"
E	GARAGE DOOR COLOR TO MATCH HARDIE IRON GRAY
F	GUARDRAIL IN BLACK
G1	ASPHALT SHINGLE ROOF
G2	METAL ROOF
H	VINYL FRAMED WINDOWS COLOR TO MATCH JAMES HARDIE IRON GRAY
I	THIN BRICK - IXL- 320 SCHOOLHOUSE RED



2 ELEVATION AT PRIMARY ENTRY FACING
SCALE 1/16"=1'-0"



4 SIDE ELEVATION
SCALE 1/16"=1'-0"



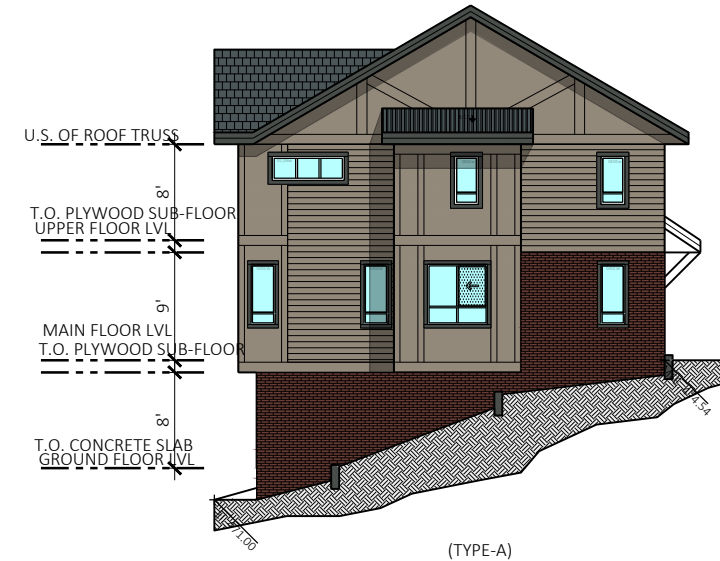
BUILDING 11

SCHEME-01

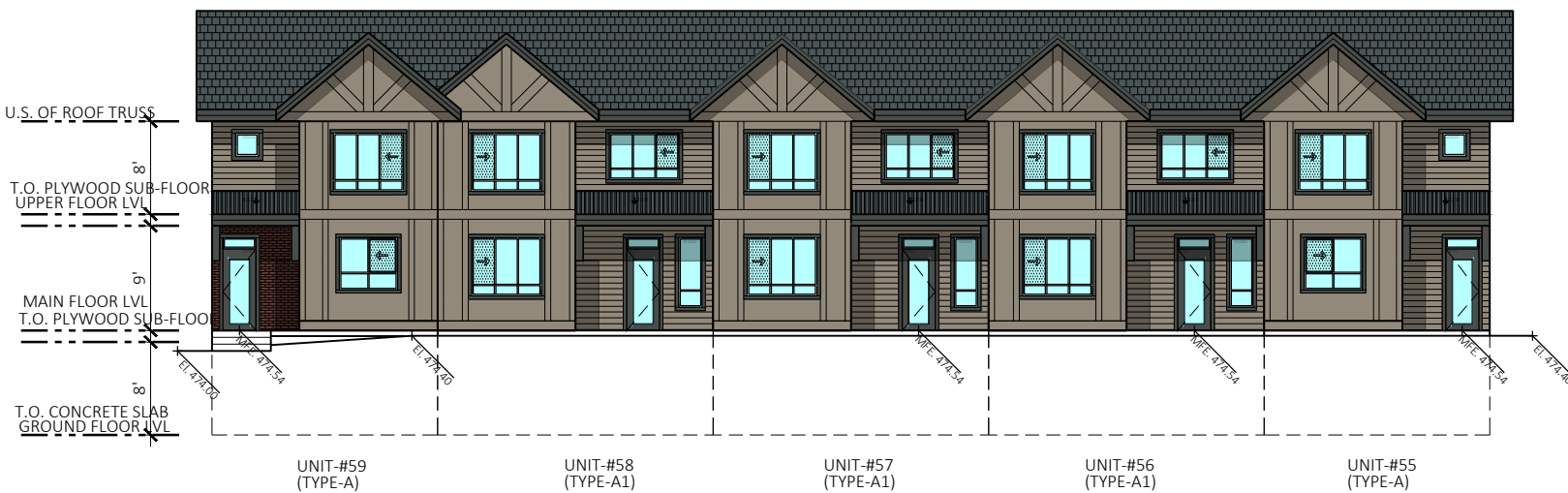
REV	DESCRIPTION	BY	DATE



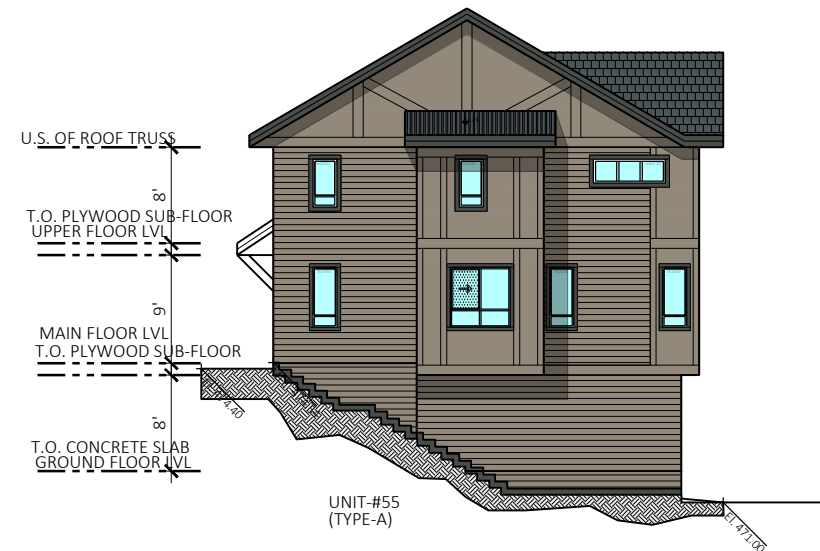
1 ELEVATION AT GARAGE SIDE FACING
SCALE 1/16"=1'-0"



3 SIDE ELEVATION
SCALE 1/16"=1'-0"



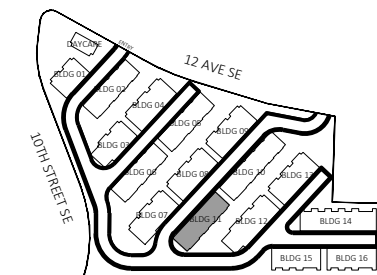
2 ELEVATION AT PRIMARY ENTRY FACING
SCALE 1/16"=1'-0"



4 SIDE ELEVATION
SCALE 1/16"=1'-0"

MATERIAL LEGEND: SCHEME 1

A	"HARDIE REVEAL SIDING" ARCTIC WHITE
B	"HARDIE BOARD & BATTEN" ARCTIC WHITE
C1	"HARDIE HORIZONTAL SIDING (4")" ARCTIC WHITE
D1	WOOD FACIA & TRIM BOOTHBAY BLUE
D2	WOOD FACIA & TRIM COLOR TO MATCH JAMES HARDIE "COLONIAL GRAY"
E	GARAGE DOOR COLOR TO MATCH HARDIE IRON GRAY
F	GUARDRAIL IN BLACK
G1	ASPHALT SHINGLE ROOF
G2	METAL ROOF
H	VINYL FRAMED WINDOWS COLOR TO MATCH JAMES HARDIE IRON GRAY
I	THIN BRICK - IXL- 320 SCHOOLHOUSE RED



BUILDING 12

SCHEME-02



PROJECT INFO:
1150-12th AVE. SE SALMON ARM

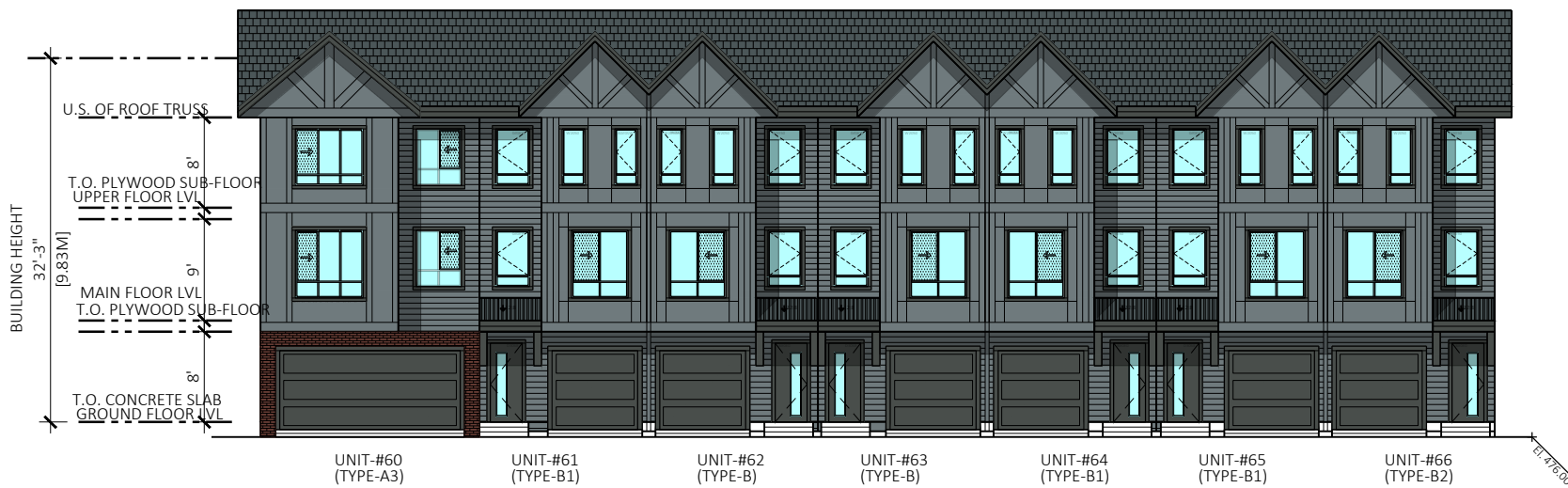
CLIENT:

DATE
JUL 2024
PROJECT NO:
21-248
SCALE: DRAWN BY:
AG

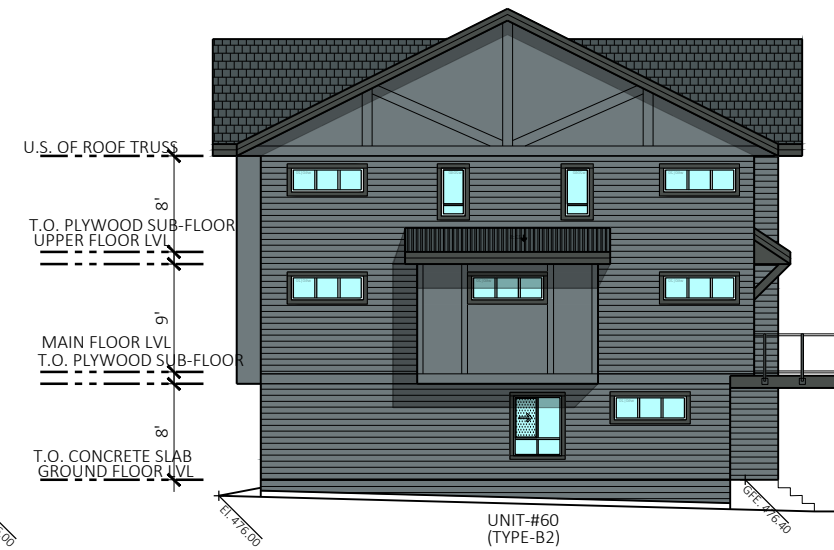
REV	DESCRIPTION	BY	DATE

ELEVATIONS

DP-312



1 ELEVATION AT GARAGE SIDE FACING
SCALE 1/16"=1'-0"



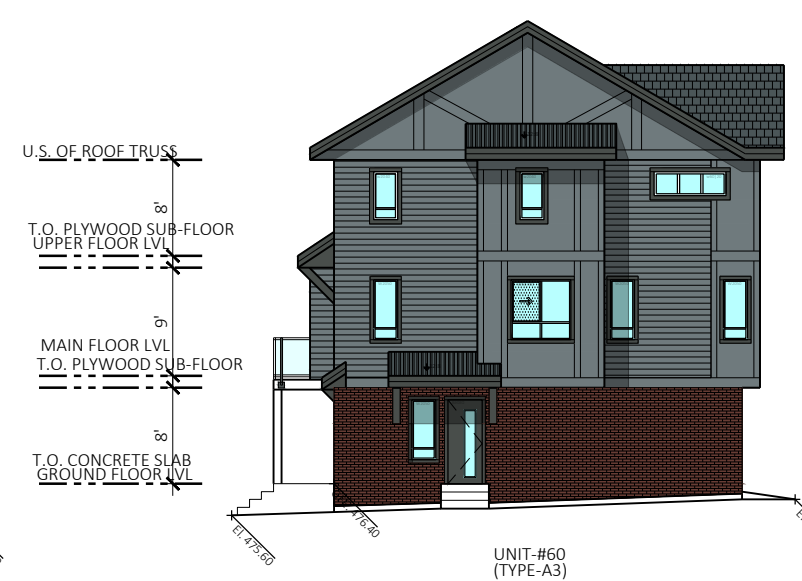
3 SIDE ELEVATION
SCALE 1/16"=1'-0"

MATERIAL LEGEND: SCHEME 2

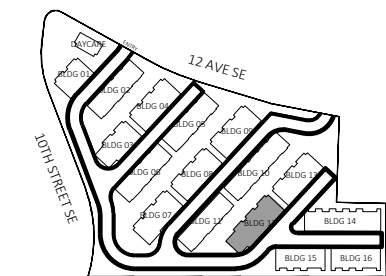
- "HARDIE REVEAL SIDING" ARCTIC WHITE
- "HARDIE BOARD & BATTEN" ARCTIC WHITE
- "HARDIE HORIZONTAL SIDING (4\")" ARCTIC WHITE
- WOOD FACIA & TRIM BOOTHBAY BLUE
- WOOD FACIA & TRIM COLOR TO MATCH JAMES HARDIE "COLONIAL GRAY"
- GARAGE DOOR COLOR TO MATCH HARDIE IRON GRAY
- GUARDRAIL IN BLACK
- ASPHALT SHINGLE ROOF
- METAL ROOF
- VINYL FRAMED WINDOWS COLOR TO MATCH JAMES HARDIE IRON GRAY
- THIN BRICK - IXL- 320 SCHOOLHOUSE RED



2 ELEVATION AT PRIMARY ENTRY FACING
SCALE 1/16"=1'-0"



4 SIDE ELEVATION
SCALE 1/16"=1'-0"



BUILDING 13

SCHEME-01



Unit 209- 6321 King George Blvd
Surrey BC, V3X 1G1
www.flatarchitecture.ca
contact@flatarchitecture.ca

Ph: 604-503-4484



PROJECT INFO:
1150-12th AVE. SE SALMON ARM

CLIENT:

DATE
JUL 2024
PROJECT NO:
21-248
SCALE: DRAWN BY:
AG

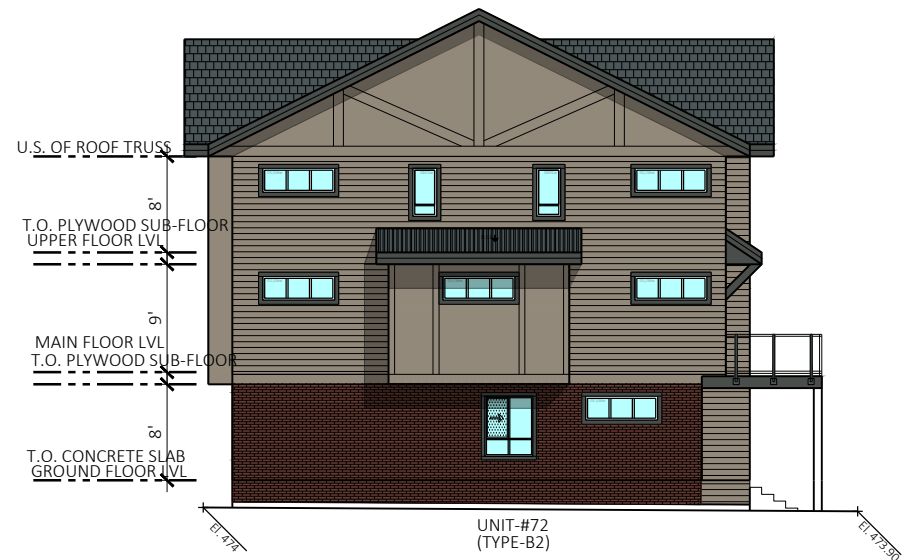
REV	DESCRIPTION	BY	DATE

ELEVATIONS

DP-313



1 ELEVATION AT GARAGE SIDE FACING
SCALE 1/16"=1'-0"



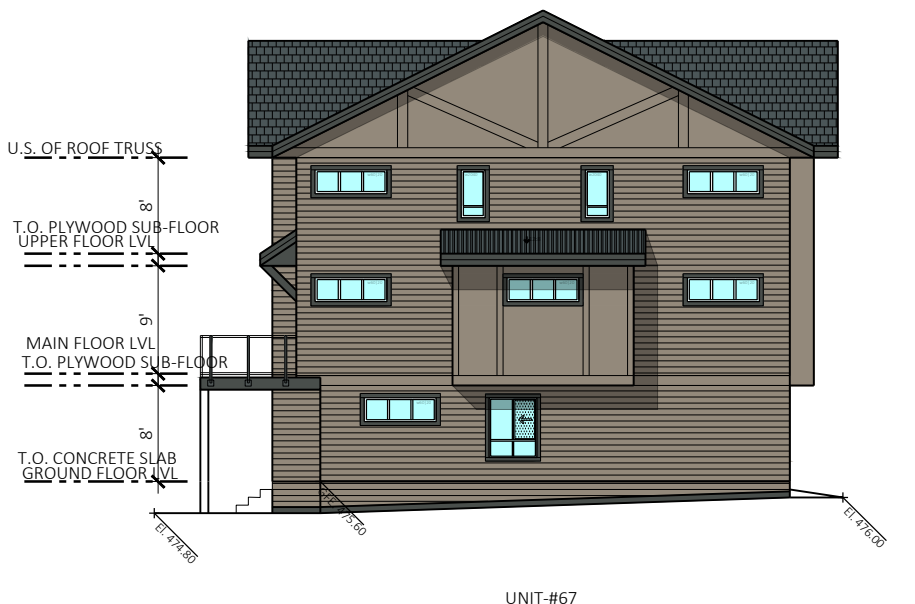
3 SIDE ELEVATION
SCALE 1/16"=1'-0"

MATERIAL LEGEND: SCHEME 1

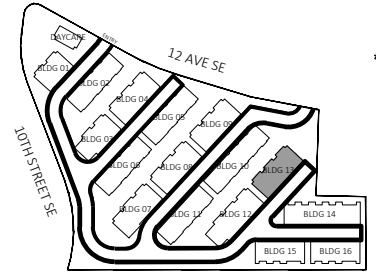
- A "HARDIE REVEAL SIDING" ARCTIC WHITE
- B "HARDIE BOARD & BATTEN" ARCTIC WHITE
- C1 "HARDIE HORIZONTAL SIDING (4")" ARCTIC WHITE
- D1 WOOD FACIA & TRIM BOOTHBAY BLUE
- D2 WOOD FACIA & TRIM COLOR TO MATCH JAMES HARDIE "COLONIAL GRAY"
- E GARAGE DOOR COLOR TO MATCH HARDIE IRON GRAY
- F GUARDRAIL IN BLACK
- G1 ASPHALT SHINGLE ROOF
- G2 METAL ROOF
- H VINYL FRAMED WINDOWS COLOR TO MATCH JAMES HARDIE IRON GRAY
- I THIN BRICK - IXL- 320 SCHOOLHOUSE RED



2 ELEVATION AT PRIMARY ENTRY FACING
SCALE 1/16"=1'-0"



4 SIDE ELEVATION
SCALE 1/16"=1'-0"



BUILDING 14

SCHEME-02



PROJECT INFO:

1150-12th AVE. SE SALMON ARM

CLIENT:

DATE

JUL 2024

PROJECT NO:

21-248

SCALE:

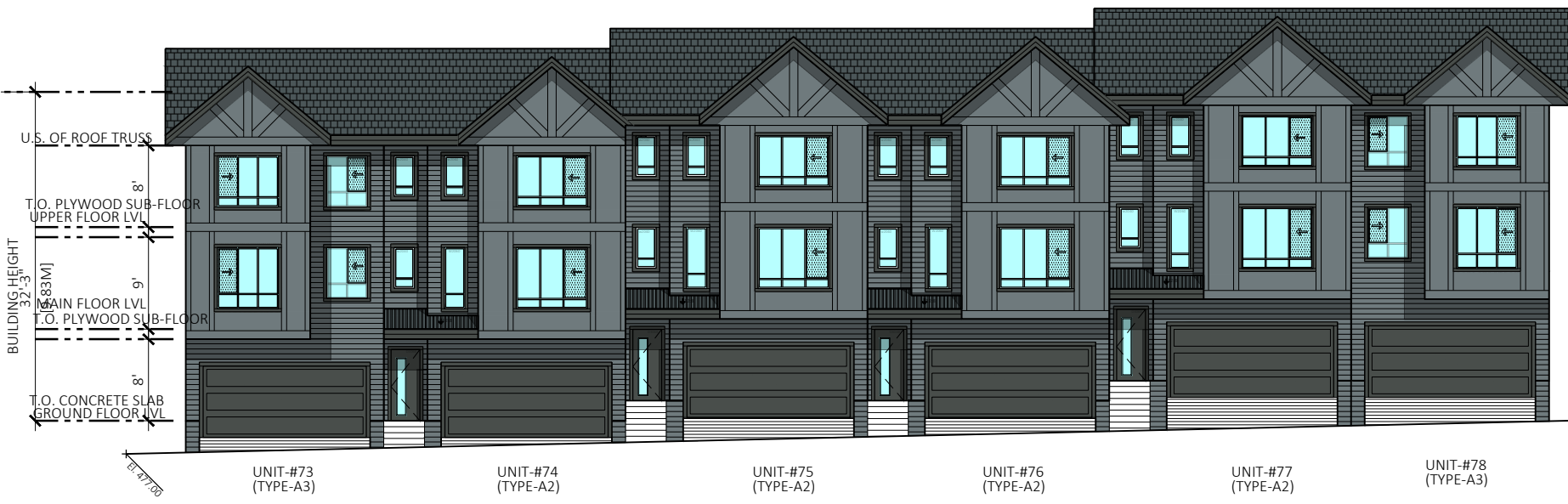
DRAWN BY:

AG

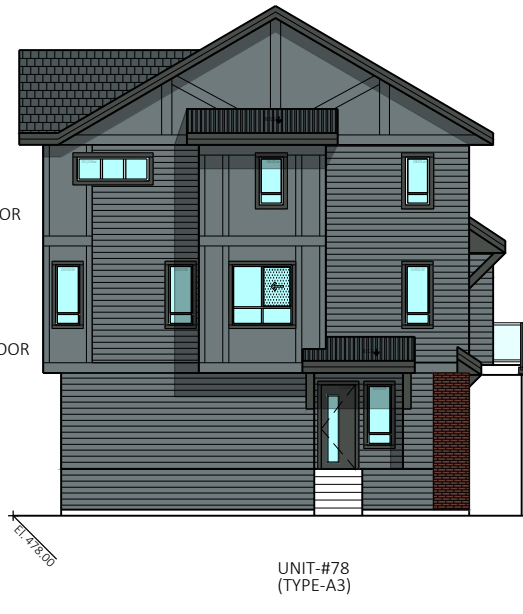
REV	DESCRIPTION	BY	DATE

ELEVATIONS

DP-314



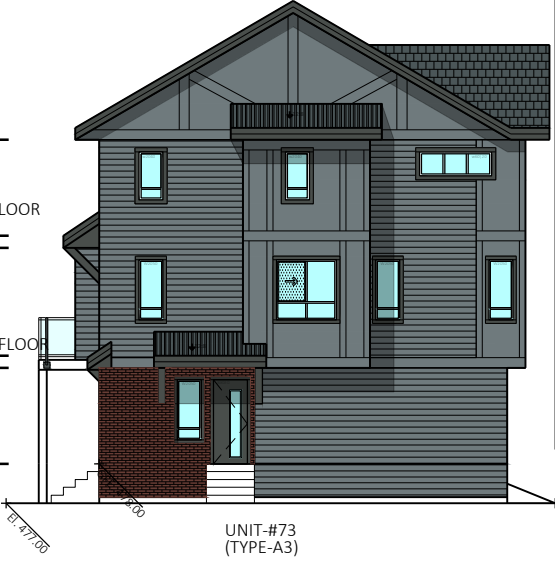
1 ELEVATION AT GARAGE SIDE FACING
SCALE 1/16"=1'-0"



3 SIDE ELEVATION
SCALE 1/16"=1'-0"



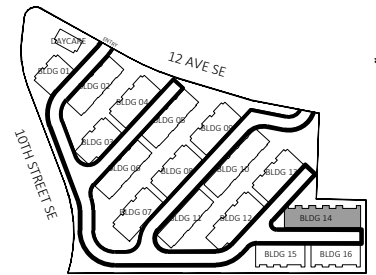
2 ELEVATION AT PRIMARY ENTRY FACING
SCALE 1/16"=1'-0"



4 SIDE ELEVATION
SCALE 1/16"=1'-0"

MATERIAL LEGEND: SCHEME 2

- A "HARDIE REVEAL SIDING" ARCTIC WHITE
- B "HARDIE BOARD & BATTEN" ARCTIC WHITE
- E1 "HARDIE HORIZONTAL SIDING (4")" ARCTIC WHITE
- D1 WOOD FACIA & TRIM BOOTHBAY BLUE
- D2 WOOD FACIA & TRIM COLOR TO MATCH JAMES HARDIE "COLONIAL GRAY"
- E GARAGE DOOR COLOR TO MATCH HARDIE IRON GRAY
- F GUARDRAIL IN BLACK
- G1 ASPHALT SHINGLE ROOF
- G2 METAL ROOF
- H VINYL FRAMED WINDOWS COLOR TO MATCH JAMES HARDIE IRON GRAY
- I THIN BRICK - IXL - 320 SCHOOLHOUSE RED



BUILDING 15

SCHEME-01



PROJECT INFO:

1150-12th AVE. SE SALMON ARM

CLIENT:

DATE

JUL 2024

PROJECT NO:

21-248

SCALE:

DRAWN BY:

AG

REV	DESCRIPTION	BY	DATE

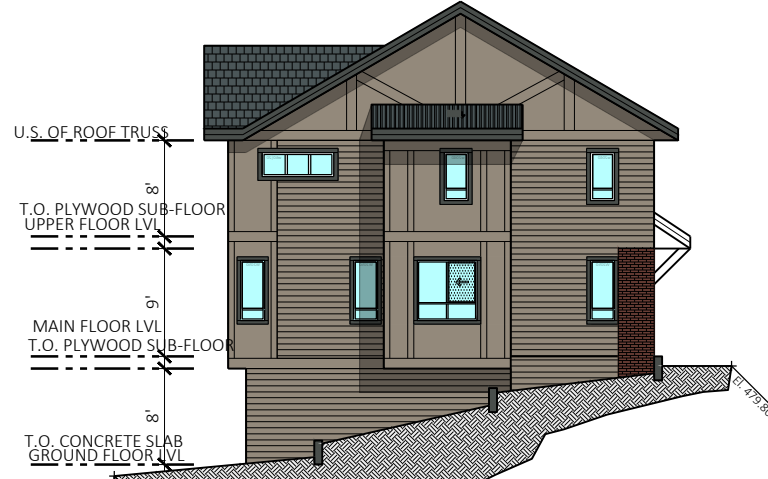
ELEVATIONS

DP-315



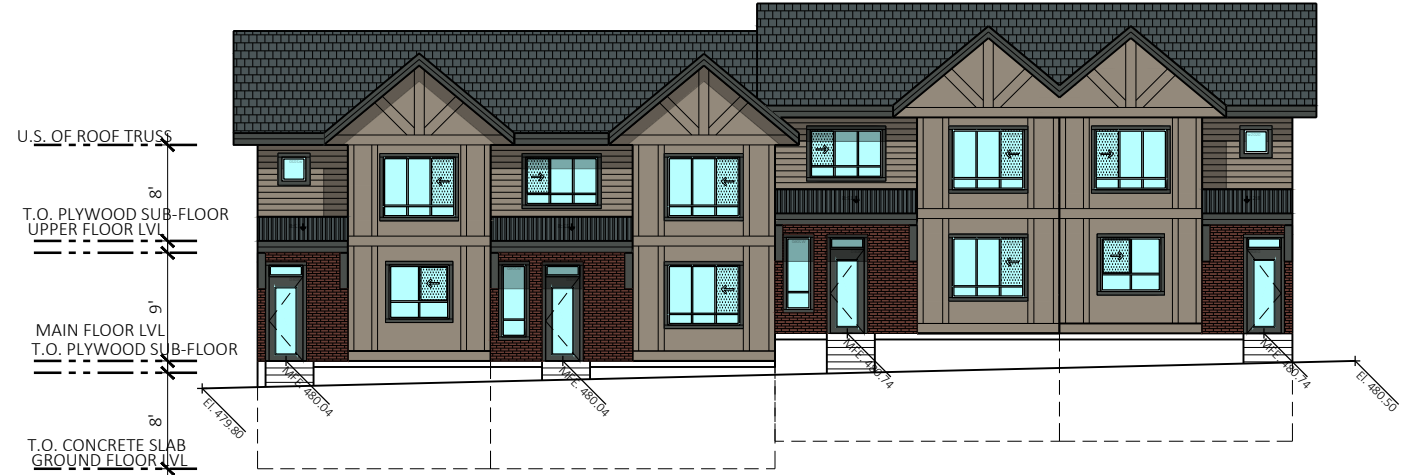
UNIT-#79 (TYPE-A) UNIT-#80 (TYPE-A1) UNIT-#81 (TYPE-A1) UNIT-#82 (TYPE-A)

1 ELEVATION AT GARAGE SIDE FACING
SCALE 1/16"=1'-0"



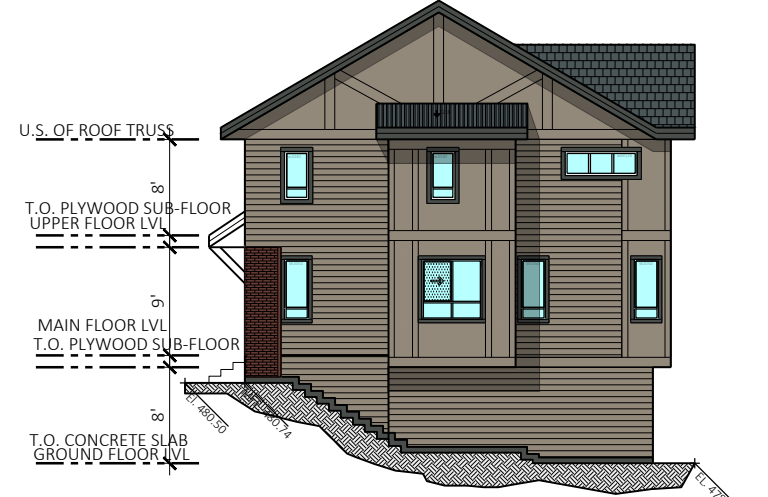
UNIT-#82 (TYPE-A)

3 SIDE ELEVATION
SCALE 1/16"=1'-0"



UNIT-#82 (TYPE-A) UNIT-#81 (TYPE-A1) UNIT-#80 (TYPE-A1) UNIT-#79 (TYPE-A)

2 ELEVATION AT PRIMARY ENTRY FACING
SCALE 1/16"=1'-0"

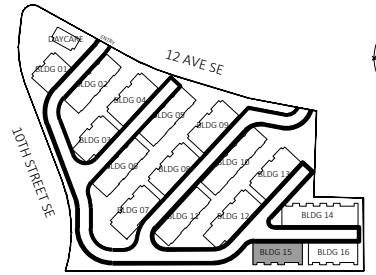


UNIT-#79 (TYPE-A)

4 SIDE ELEVATION
SCALE 1/16"=1'-0"

MATERIAL LEGEND: SCHEME 1

A	"HARDIE REVEAL SIDING" ARCTIC WHITE
B	"HARDIE BOARD & BATTEN" ARCTIC WHITE
C1	"HARDIE HORIZONTAL SIDING (4")" ARCTIC WHITE
D1	WOOD FACIA & TRIM BOOTHBAY BLUE
D2	WOOD FACIA & TRIM COLOR TO MATCH JAMES HARDIE "COLONIAL GRAY"
E	GARAGE DOOR COLOR TO MATCH HARDIE IRON GRAY
F	GUARDRAIL IN BLACK
G1	ASPHALT SHINGLE ROOF
G2	METAL ROOF
H	VINYL FRAMED WINDOWS COLOR TO MATCH JAMES HARDIE IRON GRAY
I	THIN BRICK - IXL- 320 SCHOOLHOUSE RED



BUILDING 16

SCHEME-02



Unit 209- 6321 King George Blvd
Surrey BC, V3X 1G1
www.flat7architecture.ca
contact@flat7architecture.ca

Ph: 604-503-4484



PROJECT INFO:

1150-12th AVE. SE SALMON ARM

CLIENT:

DATE

JUL2024

PROJECT NO:

21-248

SCALE:

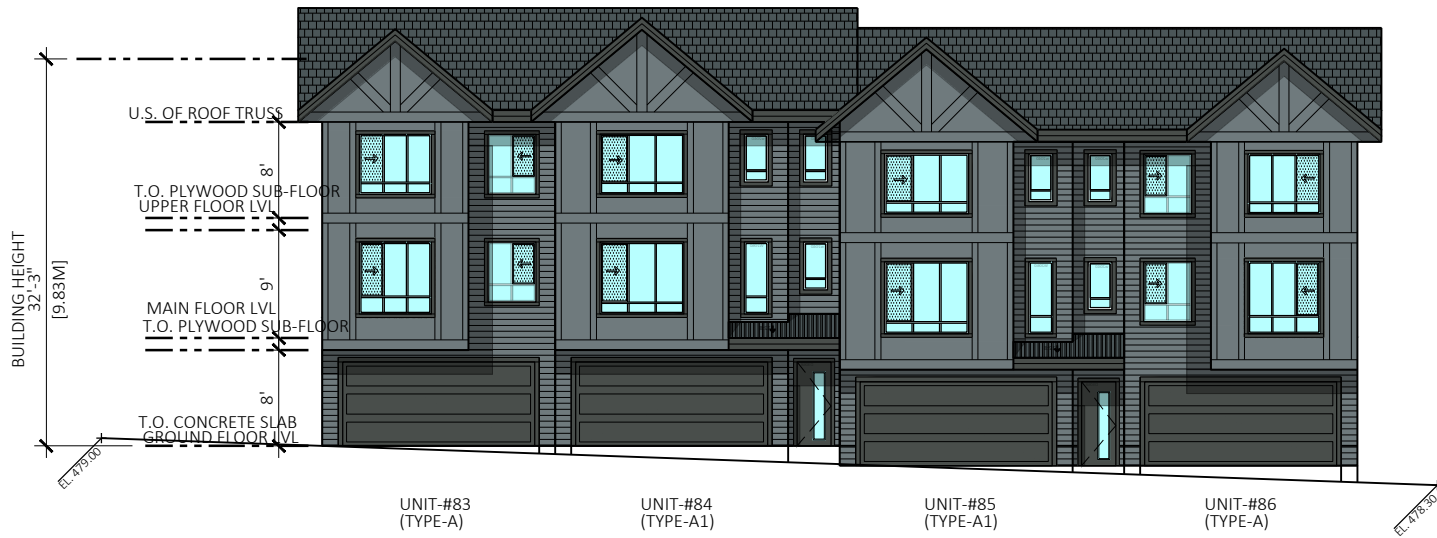
DRAWN BY:

AG

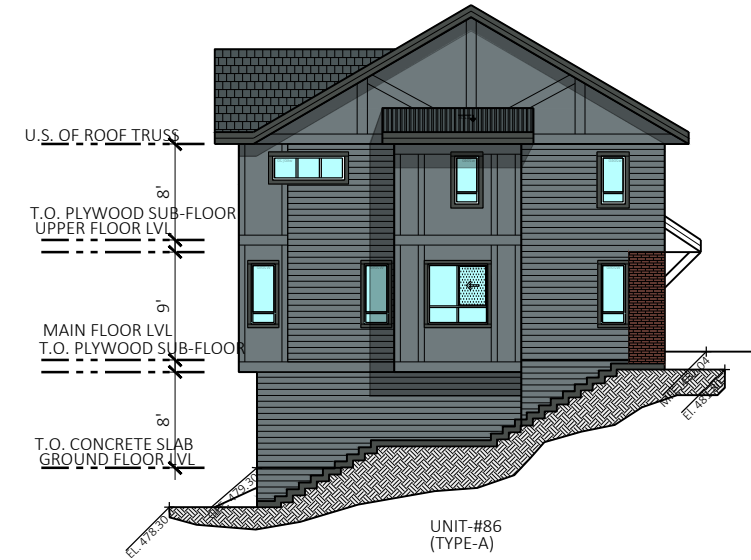
REV	DESCRIPTION	BY	DATE

ELEVATIONS

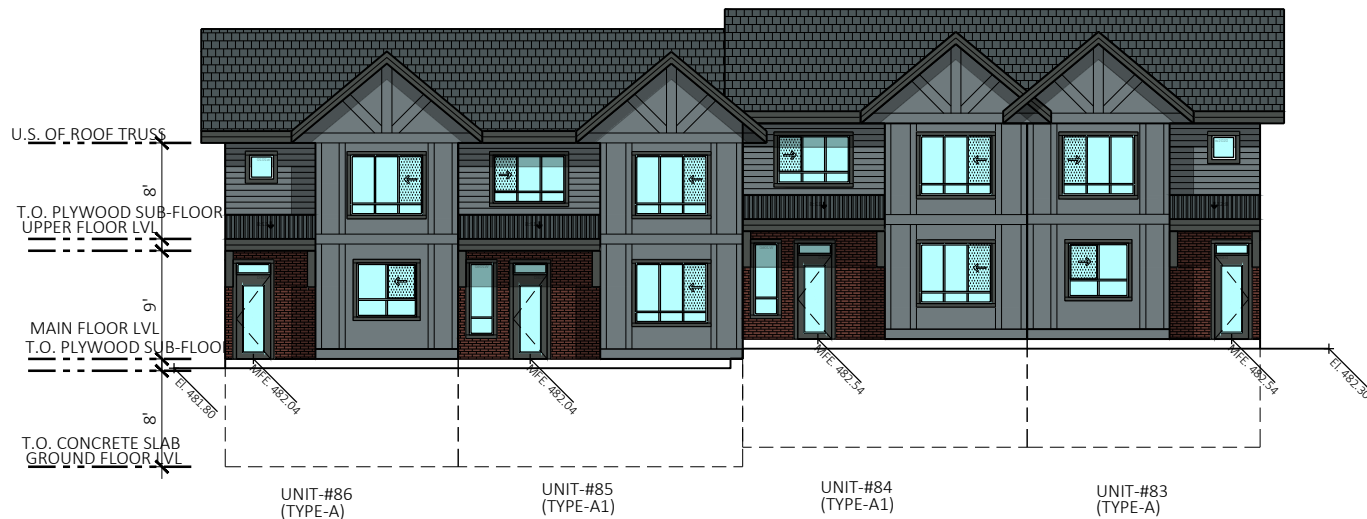
DP-316



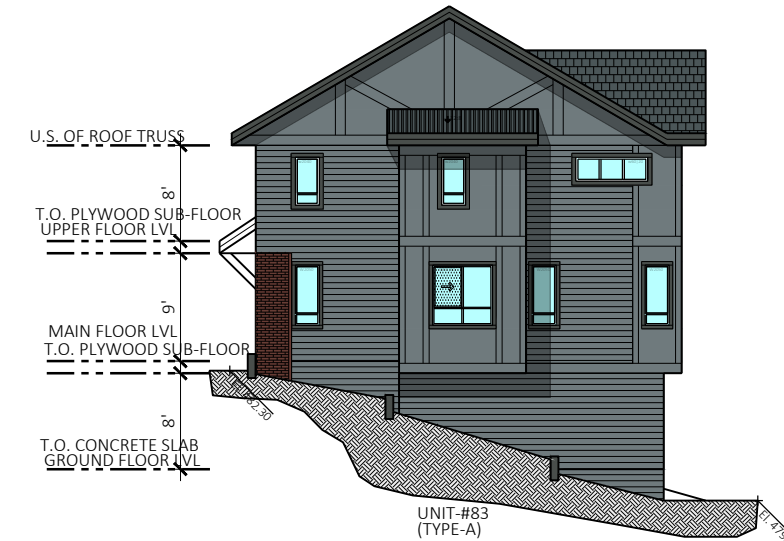
1 ELEVATION AT GARAGE SIDE FACING
SCALE 1/16"=1'-0"



3 SIDE ELEVATION
SCALE 1/16"=1'-0"



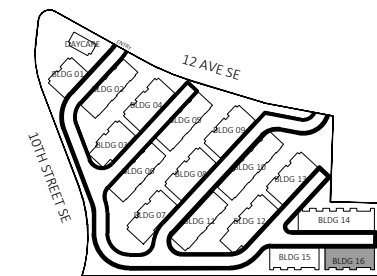
2 ELEVATION AT PRIMARY ENTRY FACING
SCALE 1/16"=1'-0"



4 SIDE ELEVATION
SCALE 1/16"=1'-0"

MATERIAL LEGEND: SCHEME 2

- "HARDIE REVEAL SIDING" ARCTIC WHITE
- "HARDIE BOARD & BATTEN" ARCTIC WHITE
- "HARDIE HORIZONTAL SIDING (4")" ARCTIC WHITE
- WOOD FACIA & TRIM BOOTHBAY BLUE
- WOOD FACIA & TRIM COLOR TO MATCH JAMES HARDIE "COLONIAL GRAY"
- GARAGE DOOR COLOR TO MATCH HARDIE IRON GRAY
- GUARDRAIL IN BLACK
- ASPHALT SHINGLE ROOF
- METAL ROOF
- VINYL FRAMED WINDOWS COLOR TO MATCH JAMES HARDIE IRON GRAY
- THIN BRICK- IXL- 320 SCHOOLHOUSE RED





FLAT!
ARCHITECTURE

Unit 209- 6321 King George Blvd
Surrey BC, V3X 1G1
www.flatarchitecture.ca
contact@flatarchitecture.ca

Ph: 604-503-4484



PROJECT INFO:
1150-12th AVE. SE SALMON ARM

DATE
JUL 2024
PROJECT NO:
21-248

SCALE: DRAWN BY:
AG

REV	DESCRIPTION	BY	DATE

STREETSCAPE

DP-501



1 SREETScape ALONG 12 AVE,
SCALE 1/40"=1'-0"



1 BLOW UP- 1
SCALE



1 BLOW UP- 2
SCALE

