



Interior Health: North Okanagan

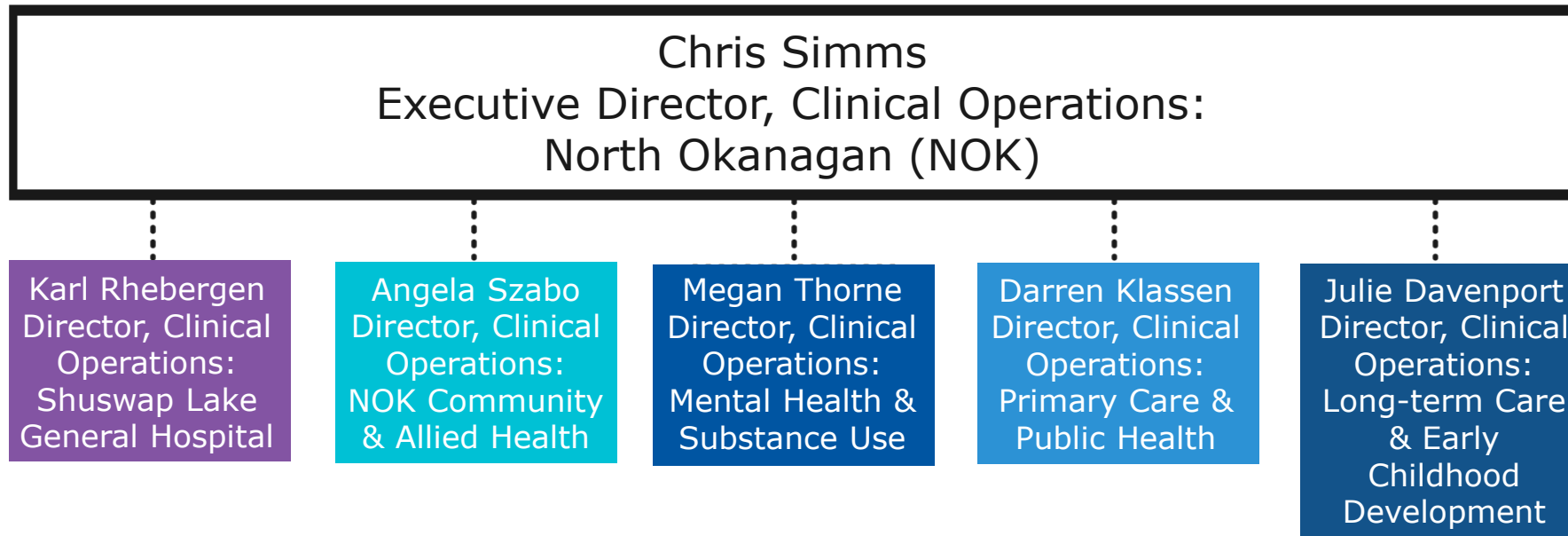
Salmon Arm Health Services
October 27, 2025

Land Acknowledgement

Interior Health would like to recognize and acknowledge the traditional, ancestral, and unceded territory of the Secwépemc Nation where we live, learn, collaborate and work together.



Leadership in Salmon Arm



Previous Presentations to Council:

- July 8, 2024: Overview of IH Services in Salmon Arm
- April 28, 2025: Long-term Care Services & Admission Process
- October 27, 2025: Updates on IH Services in Salmon Arm

Future Engagements:

- Schedule?
- Topics of interest for Council?





Shuswap Lake General Hospital (SLH)

SLH Overview of Inpatient Beds

- **Level 4 – General medical/ Surgical (Max capacity 24)**
- **Level 2 – General medical/Surgical (Max capacity 22)**
- **Maternity** – capacity to support off service admissions (**Max capacity 5**)
- **High Acuity Unit (Max capacity 3)**
- **Emergency Department**
 - 11 stretchers
 - Room 8 Secure Room
 - Room 7 Isolation
 - Two trauma Rooms



SLH Overview of Outpatient Services

- Ambulatory Care Unit
- Cancer Care
- Physiotherapy and Occupational Therapy
 - Update: Moving in Fall, 2025 to Community Health
- Nutrition Services: Diabetes Educator, Speech Language Pathologist
- Respiratory Care
- Pain Clinic
- Cardiology
- Pre-Surgical Screening



Current Key Initiatives

- **Review of Health Human Resources:**
 - Leadership Recruitment
 - Increased Nursing Staffing
- **Overall Census:**
 - Stabilized Overall Census
- **Equipment Improvements:**
 - Device Reprocessing



SLH Supporting our People

- Volunteer Program
 - Growing!
 - Recruiting!
- Indigenous Garden Space
 - Now OPEN!



A stylized human figure logo in a darker shade of blue, centered on the page. It consists of a solid circle for the head and a large, open, downward-pointing shape for the torso, resembling a heart or a protective shield.

Home & Community Care Services

Who we are:

Registered Nurses (RNs), Licensed Practical Nurses (LPNs), Physiotherapists, Occupational Therapists, Community Health Workers, Social Workers, Respiratory Therapists, Rehab assistants, Home Support Schedulers, and Administrative Support Staff.

Our programs:

- Ambulatory Nurse Clinic
- Palliative Care Services
- Home Based Seniors Care
- Home Support Services
- Community Bath Program
- Adult Day Services
- Access and Flow Support



Home & Community Care Program Overview

Ambulatory Nurse Clinic

With the support of specialty trained nurses in wound care, our team of RNs & LPNs provide care in a clinic setting or home:

- to heal acute wounds
- to treat chronic wounds
- to teach clients how to manage independently.

We have a 4-bed clinic in Salmon Arm and a satellite clinic in Sicamous.

Palliative Care Services

Supporting clients with life limiting illnesses and to assist with end-of-life care whether it is in the home, hospice beds, or in hospital. Team based care approach to provide pain and symptom management, and to relieve suffering. We also have nurses that provide support to those that chose to have medical assistance in dying (MAiD) at home or in hospice. This team meets weekly with community partners such as physicians, hospice society, community paramedics, regional palliative nurse specialists, and Bastion Place staff to share information, and to coordinate the care.



Home & Community Care Program Overview

Home Based Seniors Care

Seniors needing support in home – client and home assessments to promote independence and assist with aging in place.

Support includes assistance with personal care, chronic wound and catheter care, caregiver support and education for dementia care, and waitlisting for assisted living and long-term care facilities.

Home Support Services

Services that provide in home care for clients on a short term or long-term basis. Services offered include:

- personal care
- medication assistance
- meal assistance
- end of life care
- caregiver respite
- promoting physical activity



Home & Community Care Program Overview

Adult Day Services

Day programs with seniors to promote socialization and for caregiver respite.

Programs include:

- Activities
- Meals
- Nursing oversight
- Family and client education
- Access to the Community Bath Program

Community Bath Program

5 day per week program for clients needing shower or bath assistance outside of the home.

This provides an option for those who do not have a safe bathing environment in the home or for those that are unhoused.



Access & Flow Support

We are involved with clients as they transition to and from locations such as acute care, short stay rehab beds, facility respite beds, hospice, and home.

Nurses based in the hospital assist by connecting patients to home health or other community programs. Nurses also identify existing home and community care patients so that their care in hospital is as seamless as possible.



A large, stylized graphic of a human figure with arms and legs outstretched, rendered in a lighter shade of blue against the dark blue background. The figure is centered behind the main text.

Mental Health & Substance Use Services (MHSU)

MHSU Services Overview

- Counselling & Treatment
- Treatment Support & Recovery
- Seniors Mental Health
- Crisis and Intake Services
- Psychiatry Services
- Opioid Agonist Treatment
- Nurse Prescriber
- Integrated Treatment Teams
- Integrated Child & Youth Teams



Future State

- Expand nurse prescriber program
- Expand outreach-based services including development of a small Intensive Case Management team
- Enhance collaboration with community partners



A large, faint, stylized graphic of a human figure with arms and legs outstretched, centered in the background. The figure is composed of dark blue shapes against the blue background.

Primary Care & Public Health Services

Primary Care Overview

Key Objectives in Primary Care:

1. Narrow Patient Attachment Gap
2. Implement Team Based Care
3. Enhance Same Day Access



Public Health Overview

Key Objectives in Public Health:

1. Maternal, Child, and Family Health
2. Healthy Schools
3. Communicable Disease Prevention



Long-term Care (LTC) in Salmon Arm



Health and well-being for all
Quality | Integrity | Compassion | Safety

LTC Program Overview

LTC Services provides 24-hour professional nursing care for adults who have complex needs and can no longer be cared for in their own home or in an assisted-living residence.



Long-term Care Sites in Salmon Arm

380 Beds in the Salmon Arm

- **Bastion Place – 80 beds**

- Owner: Interior Health
- Location: 700 – 11th Ave NE
- Number of Beds: 67 LTC, 13 SSB*

- **Hillside Village – 112 beds**

- Owner: Good Samaritan Society
- Location: 2891 15th Ave NE
- Number of Beds: 112 LTC

- **Mount Ida Mews – 132 beds**

- Owner: AgeCare
- Location: 100 5th Ave SE
- Number of Beds: 132 LTC

- **Piccadilly Care Centre – 56 beds**

- Owner: Park Place
- Location: 821 10th Ave SW
- Number of Beds: 56 LTC

*SSB: Short Stay Beds



LTC Services Overview



QUESTIONS?

