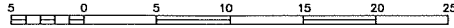
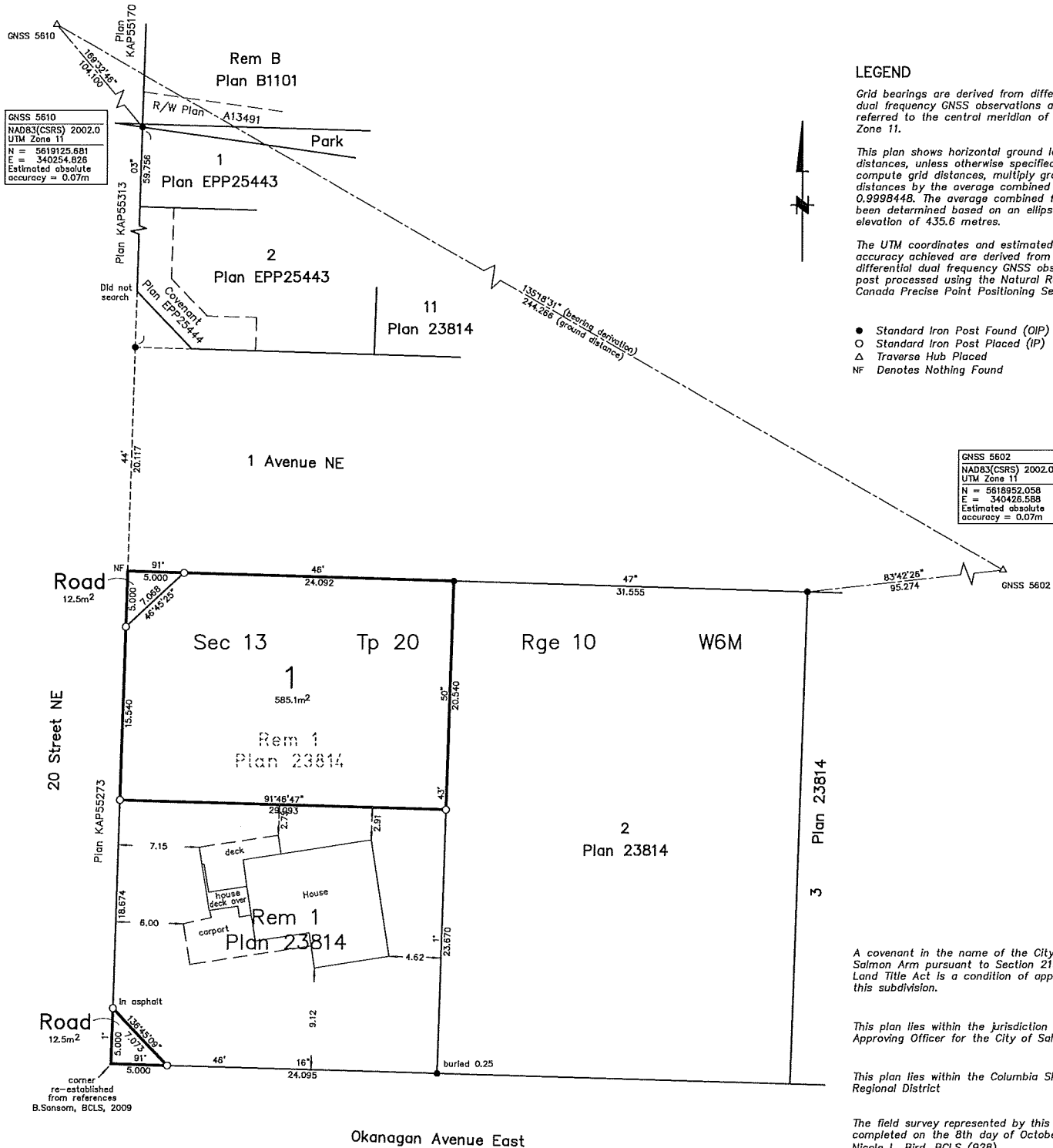


Subdivision Plan of Part of Lot 1, Sec 13, Tp 20, Rge 10, W6M, KDYD, Plan 23814 Except Plan KAP55273

BCGS 82L.074 and 82L.064



All distances are in metres.
The intended plot size of this plan is 432mm in width by 560mm in height (C size)
when plotted at a scale of 1:250



GNSS 5610
NAD83(CSR5) 2002.0
UTM Zone 11
N = 5619125.681
E = 340254.826
Estimated absolute accuracy = 0.07m

GNSS 5602
NAD83(CSR5) 2002.0
UTM Zone 11
N = 5618952.058
E = 340426.588
Estimated absolute accuracy = 0.07m

LEGEND

Grid bearings are derived from differential dual frequency GNSS observations and are referred to the central meridian of UTM Zone 11.

This plan shows horizontal ground level distances, unless otherwise specified. To compute grid distances, multiply ground level distances by the average combined factor of 0.9998448. The average combined factor has been determined based on an ellipsoidal elevation of 435.6 metres.

The UTM coordinates and estimated absolute accuracy achieved are derived from differential dual frequency GNSS observations post processed using the Natural Resources Canada Precise Point Positioning Service.

- Standard Iron Post Found (OIP)
- Standard Iron Post Placed (IP)
- △ Traverse Hub Placed
- NF Denotes Nothing Found

A covenant in the name of the City of Salmon Arm pursuant to Section 219 of the Land Title Act is a condition of approval for this subdivision.

This plan lies within the jurisdiction of the Approving Officer for the City of Salmon Arm

This plan lies within the Columbia Shuswap Regional District

The field survey represented by this plan was completed on the 8th day of October, 2021
Nicole L. Bird, BCLS (928)

BROWNE JOHNSON LAND SURVEYORS
B.C. AND CANADA LANDS
SALMON ARM, B.C. 250-832-9701
File: 231-21 (288-09) 231-21.raw