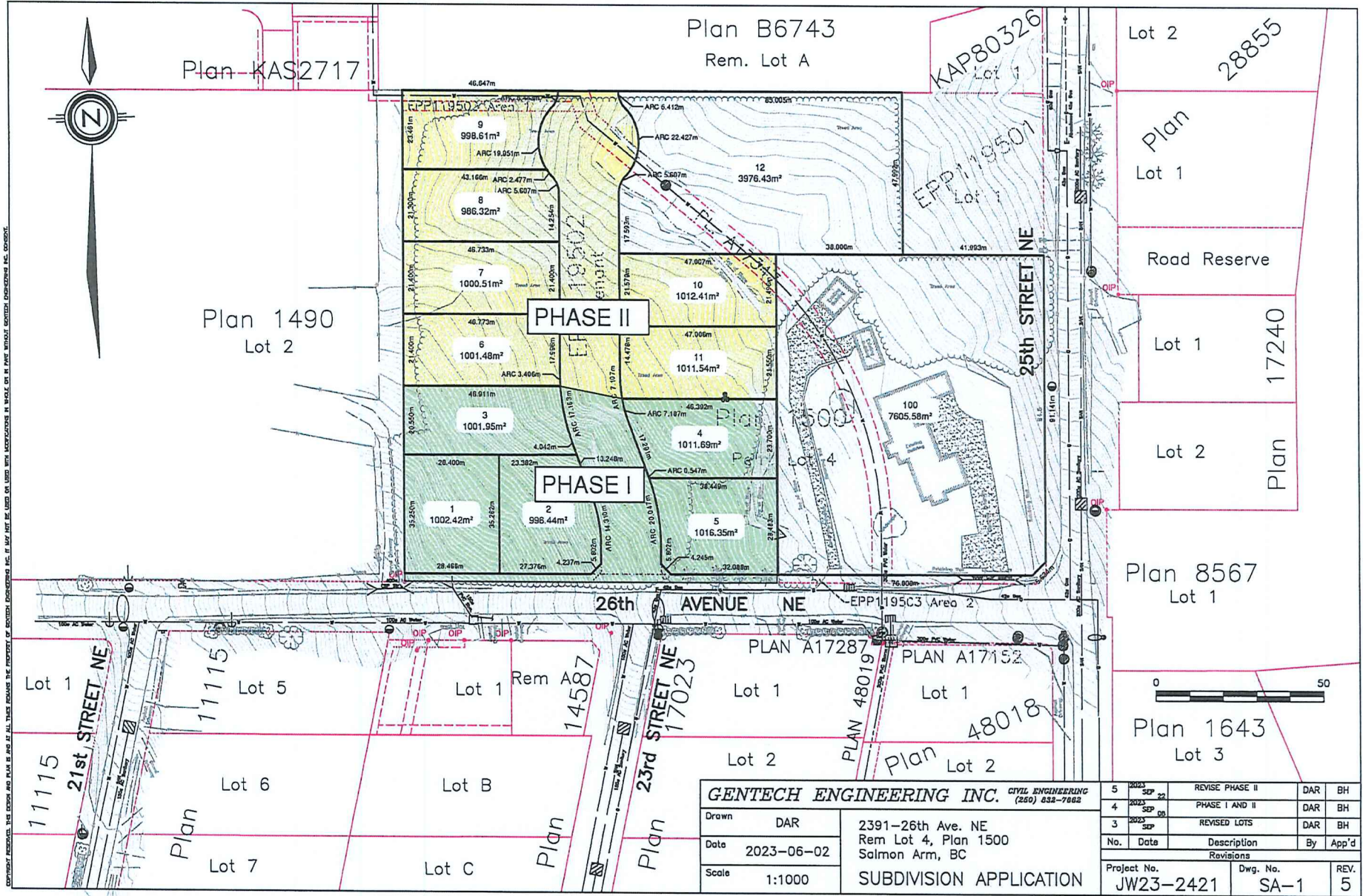


COPYRIGHT RESERVED. THIS DRAWING SHALL BE VOID IF ALL THESE REMAINS THE PROPERTY OF GENTECH ENGINEERING INC. IT MAY NOT BE USED OR REPRODUCED IN WHOLE OR IN PART WITHOUT GENTECH ENGINEERING INC. CONSENT.



GENTECH ENGINEERING INC. CIVIL ENGINEERING
(250) 832-7082

Drawn: DAR
Date: 2023-06-02
Scale: 1:1000

2391-26th Ave. NE
Rem Lot 4, Plan 1500
Salmon Arm, BC

SUBDIVISION APPLICATION

5	2023 SEP 22	REVISE PHASE II	DAR	BH
4	2023 SEP 05	PHASE I AND II	DAR	BH
3	2023 SEP 05	REVISED LOTS	DAR	BH
No.	Date	Description	By	App'd
Revisions				
Project No. JW23-2421			Dwg. No. SA-1	REV. 5

Appendix 1: Proposed Subdivision