

A large, faint, stylized graphic in the background of the slide. It depicts a person with their arms raised in a circle, forming a shape similar to a stylized 'H' or a person in a yoga pose. The graphic is composed of dark blue and light blue shapes.

# Interior Health: Long-term Care Services & Admission Process

April 28, 2025

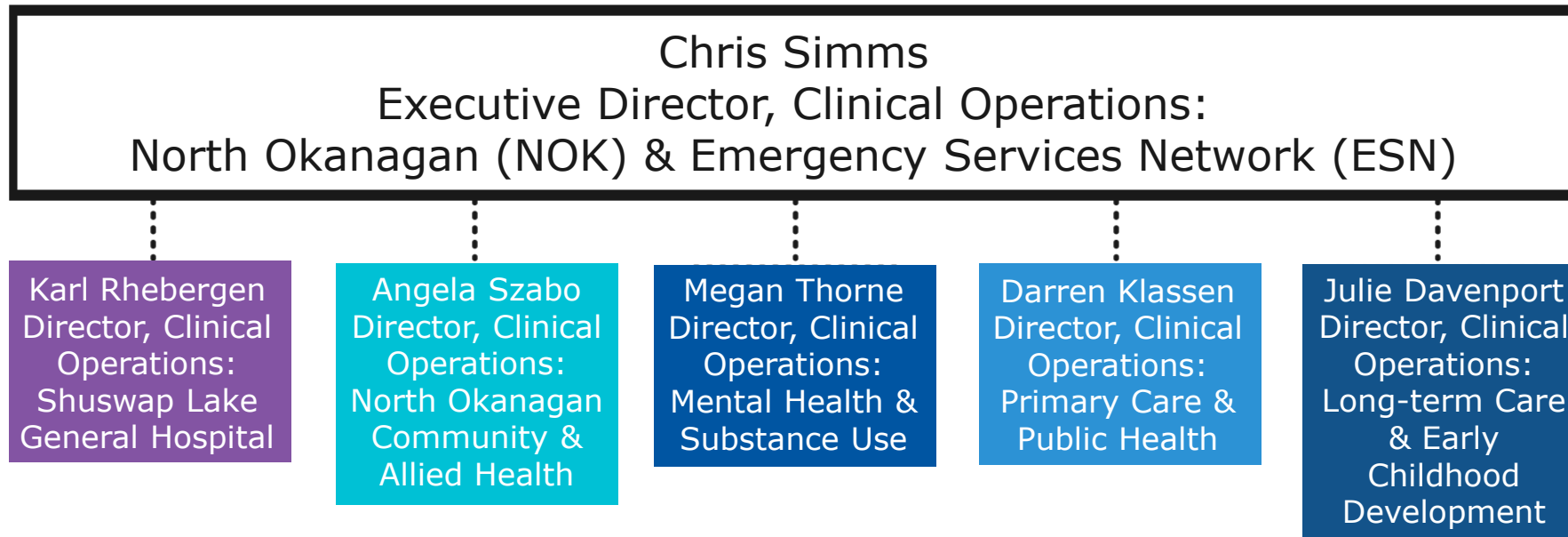
# Land Acknowledgement

---

Interior Health would like to recognize and acknowledge the traditional, ancestral, and unceded territory of the Secwépemc Nation where we live, learn, collaborate and work together.



# Leadership NOK





# Home Health Central Intake

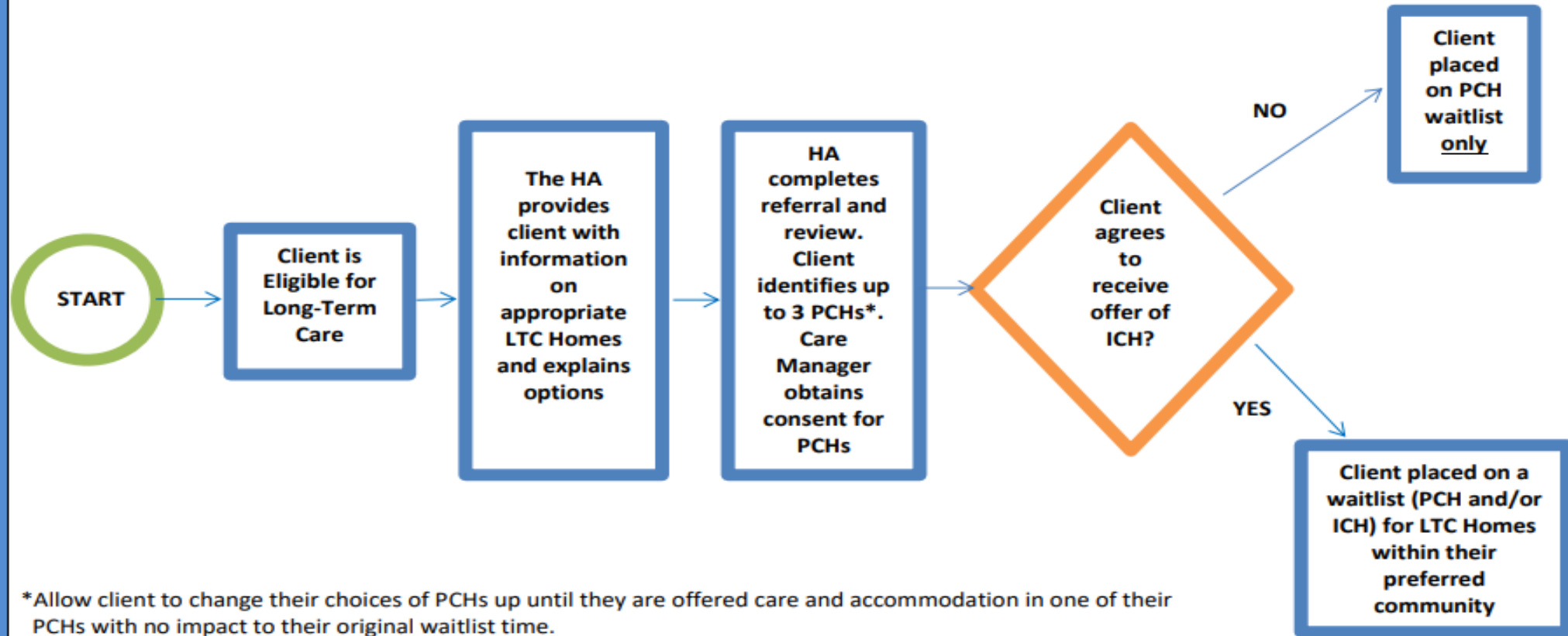
1 – 800 – 707- 8550

A large, faint, light blue graphic in the background depicts a stylized human figure with arms raised in a 'V' shape, set against a dark blue circular backdrop. Above the figure is a solid dark blue circle.

# Home Health Access Team

# Long Term Care (LTC)

## WAITLISTING





# Assisted Living



Health and well-being for all  
Quality | Integrity | Compassion | Safety

# Short Stay Beds (SSB)

- Convalescent Care
- Palliative Care
- Respite Care





# Future Opportunities

---

- Utilization of short and long term resources
- Most Responsible Clinician (MRC)
- Core Service Accessibility



# Long-term Care (LTC) in Salmon Arm



Health and well-being for all  
Quality | Integrity | Compassion | Safety



# LTC Program Overview

---

Long-term Care Services provides 24 hour professional nursing care for adults who have complex needs and can no longer be cared for in their own home or in an assisted living residence.



# Long-term Care Sites in Salmon Arm

## 380 Beds in the Salmon Arm

- **Bastion Place**

- Owner: Interior Health
- Location: 700 – 11<sup>th</sup> Ave NE
- Number of Beds: 67 LTC, 13 SSB\*

- **Hillside Village**

- Owner: Good Samaritan Society
- Location: 2891 15<sup>th</sup> Ave NE
- Number of Beds: 112 LTC

- **Mount Ida Mews**

- Owner: AgeCare
- Location: 100 5<sup>th</sup> Ave SE
- Number of Beds: 132 LTC

- **Piccadilly Care Centre**

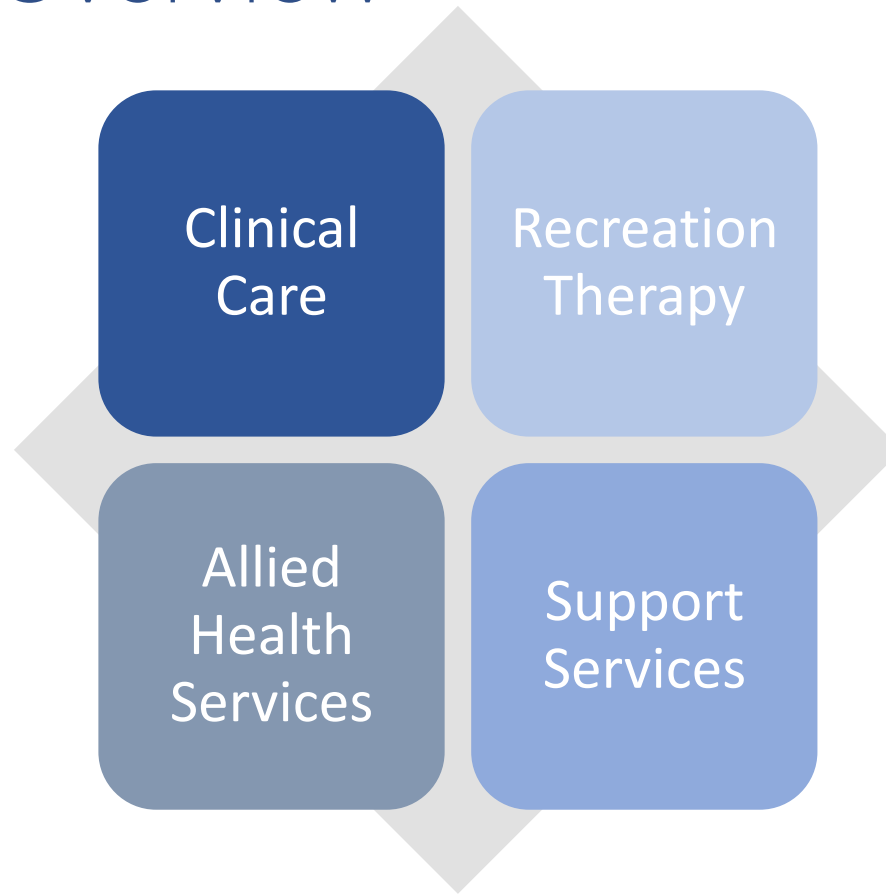
- Owner: Park Place
- Location: 821 10<sup>th</sup> Ave SW
- Number of Beds: 56 LTC

\*SSB: Short Stay Beds





# LTC Services Overview



# QUESTIONS?

---



Health and well-being for all  
Quality | Integrity | Compassion | Safety