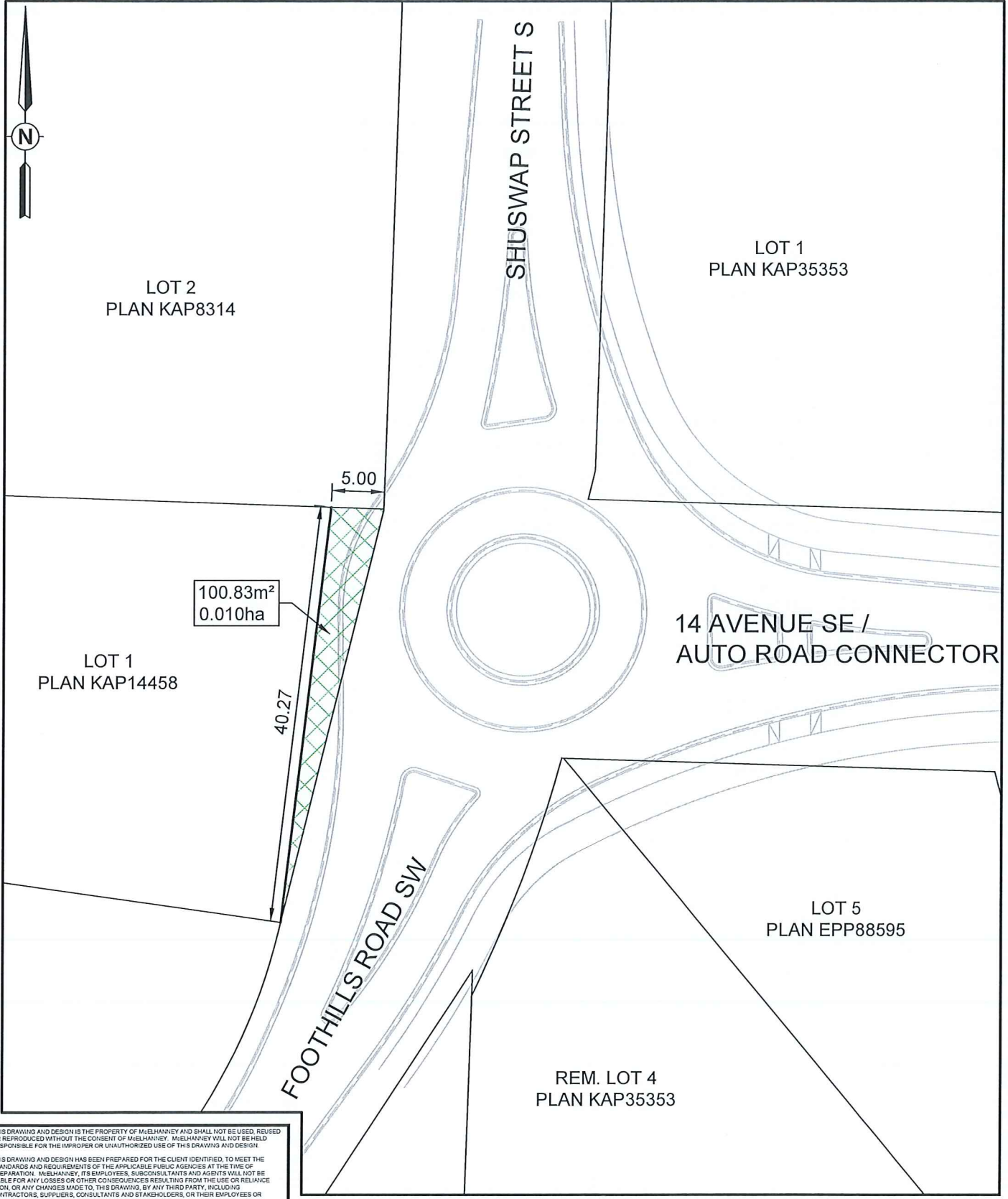


Appendix 10: Additional Road Dedication Plan

DATE: 2023-09-19, 08:31 FILE: \\corp\TAL\COLO\61\Project\2461-0626-100-SA - Roundabout\10.0 DRAWINGS\10.3 Engineering\10.3.2 Sketches\CJ LAND ACQUISITION\0626-100-C3-CF01.dwg



THIS DRAWING AND DESIGN IS THE PROPERTY OF McElhanney AND SHALL NOT BE USED, REUSED OR REPRODUCED WITHOUT THE CONSENT OF McELHANNEY. McELHANNEY WILL NOT BE HELD RESPONSIBLE FOR THE IMPROPER OR UNAUTHORIZED USE OF THIS DRAWING AND DESIGN.

THIS DRAWING AND DESIGN HAS BEEN PREPARED FOR THE CLIENT IDENTIFIED, TO MEET THE STANDARDS AND REQUIREMENTS OF THE APPLICABLE PUBLIC AGENCIES AT THE TIME OF PREPARATION. McELHANNEY, ITS EMPLOYEES, SUBCONSULTANTS AND AGENTS WILL NOT BE LIABLE FOR ANY LOSSES OR OTHER CONSEQUENCES RESULTING FROM THE USE OR RELIANCE UPON, OR ANY CHANGES MADE TO, THIS DRAWING, BY ANY THIRD PARTY, INCLUDING CONTRACTORS, SUPPLIERS, CONSULTANTS AND STAKEHOLDERS, OR THEIR EMPLOYEES OR AGENTS, WITHOUT McELHANNEY'S PRIOR WRITTEN CONSENT.

INFORMATION ON EXISTING UNDERGROUND FACILITIES MAY NOT BE COMPLETE OR ACCURATE. McELHANNEY, ITS EMPLOYEES AND DIRECTORS ARE NOT RESPONSIBLE NOR LIABLE FOR THE LOCATION OF ANY UNDERGROUND CONDUITS, PIPES, CABLES OR OTHER FACILITIES WHETHER SHOWN OR OMITTED FROM THIS PLAN. PRIOR TO CONSTRUCTION CONTRACTOR SHALL EXPOSE LOCATIONS OF ALL EXISTING FACILITIES BY HAND DIGGING OR HYDROVAC AND ADVISE THE ENGINEER OF POTENTIAL CONFLICTS.



Suite 104  
3310 32 Avenue  
Vernon BC  
Canada V1T 2M6  
T 250 861 8783

**CITY OF SALMON ARM**  
500 - 2 AVENUE NE, SALMON ARM, BC, V1E 4N2

**SHUSWAP STREET S / FOOTHILLS ROAD SW  
& 14 AVENUE SE ROUNDABOUT  
LOT 1 PLAN KAP14458  
LAND ACQUISITION**

Drawing No.	
<b>CF01</b>	
Project Number	Rev.
2461-0626-100	A

DESTROY ALL PRINTS BEARING PREVIOUS REVISION